

For Research Use Only

# SLC1A2 Monoclonal antibody, PBS Only (Capture)

Catalog Number: 67083-2-PBS



## Basic Information

Catalog Number:	GenBank Accession Number:	Purification Method:
67083-2-PBS	BC132768	Protein G purification
Concentration:	GeneID (NCBI):	CloneNo.:
1 mg/ml	6506	2H8B6
Source:	UNIPROT ID:	
Mouse	P43004	
Isotype:	Full Name:	
IgG1	solute carrier family 1 (glial high affinity glutamate transporter), member 2	
Immunogen Catalog Number:	Calculated MW:	
AG19816	574 aa, 62 kDa	

## Applications

**Tested Applications:**  
Cytometric bead array, Indirect ELISA, Sample test

**Species Specificity:**  
human

## Background Information

### Storage

**Storage:**  
Store at -80°C.  
**The product is shipped with ice packs. Upon receipt, store it immediately at -80°C**

**Storage Buffer:**  
PBS only, pH7.3

For technical support and original validation data for this product please contact:

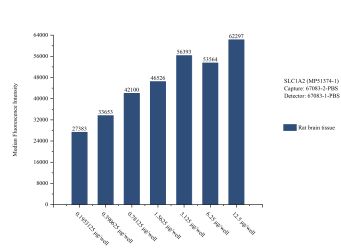
T: 4006900926

E: [Proteintech-CN@ptglab.com](mailto:Proteintech-CN@ptglab.com)

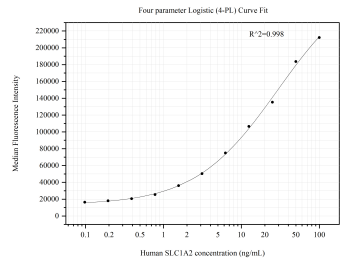
W: [ptgcn.com](http://ptgcn.com)

**This product is exclusively available under Proteintech Group brand and is not available to purchase from any other manufacturer.**

# Selected Validation Data



Sample test of MP51374-1, SLC1A2 Monoclonal Matched Antibody Pair, PBS Only. Capture antibody: 67083-2-PBS. Detection antibody: 67083-1-PBS.



Cytometric bead array standard curve of MP51374-1, SLC1A2 Monoclonal Matched Antibody Pair, PBS Only. Capture antibody: 67083-2-PBS. Detection antibody: 67083-1-PBS. Standard:Ag19816. Range: 0.098-100 ng/mL.