

For Research Use Only

Myogenin Monoclonal antibody

Catalog Number: 67082-1-Ig **17 Publications**



Basic Information

Catalog Number: 67082-1-Ig	GenBank Accession Number: BC053899	Purification Method: Protein A purification
Size: 1000 µg/ml	GeneID (NCBI): 4656	CloneNo.: 1C10B9
Source: Mouse	UNIPROT ID: P15173	Recommended Dilutions: WB 1:1000-1:4000
Isotype: IgG1	Full Name: myogenin (myogenic factor 4)	
Immunogen Catalog Number: AG6414	Calculated MW: 25 kDa	
	Observed MW: 26 kDa	

Applications

Tested Applications: WB, ELISA	Positive Controls: WB : human skeletal muscle tissue, human heart tissue, pig heart tissue, rat heart tissue
Cited Applications: WB, IF	
Species Specificity: Human, Rat, Pig	
Cited Species: human, mouse, rabbit, bovine, goat	

Background Information

MYOG (encoded Myogenin protein) is a muscle-specific transcription factor which belongs to a family of basic helix-loop-helix transcription factors. It plays a role in muscle differentiation, cell cycle exit and muscle atrophy (PMID: 30315160). It can be initiate the myogenic program in myoblasts, fibroblasts and variety of other cell types. Diseases associated with MYOG include Embryonal Rhabdomyosarcoma and Gallbladder Sarcoma.

Notable Publications

Author	Pubmed ID	Journal	Application
Yuanyuan Wu	36075558	Cell Signal	WB, IF
Zhen Zhang	34935184	FASEB J	WB
Zhen Zhang	35635726	FASEB J	WB

Storage

Storage:
Store at -20°C.
Storage Buffer:
PBS with 0.02% sodium azide and 50% glycerol pH 7.3.
Aliquoting is unnecessary for -20°C storage

For technical support and original validation data for this product please contact:

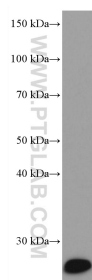
T: 4006900926

E: Proteintech-CN@ptglab.com

W: ptgcn.com

This product is exclusively available under Proteintech Group brand and is not available to purchase from any other manufacturer.

Selected Validation Data



human skeletal muscle tissue were subjected to SDS PAGE followed by western blot with 67082-1-Ig (Myogenin antibody) at dilution of 1:2000 incubated at room temperature for 1.5 hours.