

ASK1 Monoclonal antibody, PBS Only

Catalog Number: 67072-1-PBS

Basic Information

Catalog Number: 67072-1-PBS	GenBank Accession Number: BC054503	Purification Method: Protein G purification
Size: 1 mg/ml	GeneID (NCBI): 4217	CloneNo.: 1C3A10
Source: Mouse	UNIPROT ID: Q99683	
Isotype: IgG1	Full Name: mitogen-activated protein kinase kinase kinase 5	
Immunogen Catalog Number: AG5818	Calculated MW: 155 kDa	
	Observed MW: 110 kDa	

Applications

Tested Applications:
WB, Indirect ELISA, IHC, IF

Species Specificity:
Human, Mouse, Rat

Background Information

ASK1 (Apoptosis signal-regulating kinase 1) is also named as MAP3K5, MAPKKK5, MEK5 and belongs to the MAP kinase kinase kinase subfamily. It is an evolutionarily conserved mitogen activated protein 3-kinase that activates both Jnk and p38 mitogen-activated protein kinases. ASK1 is activated in response to various cytotoxic stresses including TNF, Fas and reactive oxygen species (ROS) such as H₂O₂, and activates c-Jun NH 2-terminal kinase (JNK) and p38. 67072-1-Ig antibody detects the degraded product of ASK1 in SDS-PAGE.

Storage

Storage:
Store at -80°C.
The product is shipped with ice packs. Upon receipt, store it immediately at -80°C

Storage Buffer:
PBS Only

For technical support and original validation data for this product please contact:

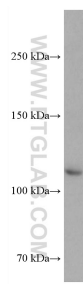
T: 4006900926

E: Proteintech-CN@ptglab.com

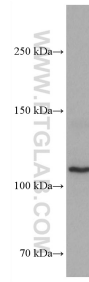
W: ptgcn.com

This product is exclusively available under Proteintech Group brand and is not available to purchase from any other manufacturer.

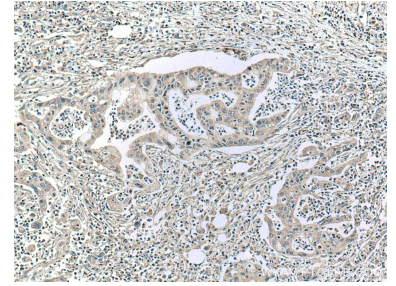
Selected Validation Data



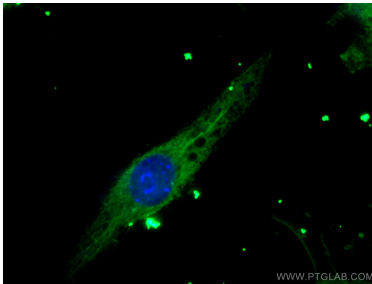
HEK-293 cells were subjected to SDS PAGE followed by western blot with 67072-1-Ig (ASK1 antibody) at dilution of 1:3000 incubated at room temperature for 1.5 hours. This data was developed using the same antibody clone with 67072-1-PBS in a different storage buffer formulation.



HSC-T6 cells were subjected to SDS PAGE followed by western blot with 67072-1-Ig (ASK1 antibody) at dilution of 1:3000 incubated at room temperature for 1.5 hours. This data was developed using the same antibody clone with 67072-1-PBS in a different storage buffer formulation.



Immunohistochemical analysis of paraffin-embedded human pancreas cancer tissue slide using 67072-1-Ig (ASK1 antibody) at dilution of 1:300 (under 10x lens. Heat mediated antigen retrieval with Tris-EDTA buffer (pH 9.0)). This data was developed using the same antibody clone with 67072-1-PBS in a different storage buffer formulation.



Immunofluorescent analysis of (-20°C Ethanol) fixed RAW 264.7 cells using ASK1 antibody (67072-1-Ig, Clone: 1C3A10) at dilution of 1:200 and CoraLite®488-Conjugated AffiniPure Goat Anti-Mouse IgG(H+L). This data was developed using the same antibody clone with 67072-1-PBS in a different storage buffer formulation.