

For Research Use Only

# ASK1 Monoclonal antibody

Catalog Number: 67072-1-Ig **10 Publications**



## Basic Information

<b>Catalog Number:</b> 67072-1-Ig	<b>GenBank Accession Number:</b> BC054503	<b>Purification Method:</b> Protein G purification
<b>Size:</b> 1000 µg/ml	<b>GeneID (NCBI):</b> 4217	<b>CloneNo.:</b> 1C3A10
<b>Source:</b> Mouse	<b>UNIPROT ID:</b> Q99683	<b>Recommended Dilutions:</b> WB 1:1000-1:6000 IHC 1:150-1:600 IF/ICC 1:50-1:500
<b>Isotype:</b> IgG1	<b>Full Name:</b> mitogen-activated protein kinase kinase kinase 5	
<b>Immunogen Catalog Number:</b> AG5818	<b>Calculated MW:</b> 155 kDa <b>Observed MW:</b> 110 kDa	

## Applications

<b>Tested Applications:</b> WB, IHC, IF/ICC, ELISA	<b>Positive Controls:</b> WB : HSC-T6 cells, HEK-293 cells, Jurkat cells, HeLa cells, MCF-7 cells, NIH/3T3 cells IHC : human pancreas cancer tissue, mouse heart tissue, human lung cancer tissue IF/ICC : RAW 264.7 cells,
<b>Cited Applications:</b> WB, IF	
<b>Species Specificity:</b> Human, Mouse, Rat	
<b>Cited Species:</b> human, mouse, rat	

**Note-IHC: suggested antigen retrieval with TE buffer pH 9.0; (\*) Alternatively, antigen retrieval may be performed with citrate buffer pH 6.0**

## Background Information

ASK1 (Apoptosis signal-regulating kinase 1) is also named as MAP3K5, MAPKKK5, MEKK5 and belongs to the MAP kinase kinase kinase subfamily. It is an evolutionarily conserved mitogen activated protein 3-kinase that activates both Jnk and p38 mitogen-activated protein kinases. ASK1 is activated in response to various cytotoxic stresses including TNF, Fas and reactive oxygen species (ROS) such as H<sub>2</sub>O<sub>2</sub>, and activates c-Jun NH 2-terminal kinase (JNK) and p38. 67072-1-Ig antibody detects the degraded product of ASK1 in SDS-PAGE.

## Notable Publications

Author	Pubmed ID	Journal	Application
Xiao-Lin Jiang	36309912	Aging (Albany NY)	WB
Xiao-Lin Jiang	36465612	Front Endocrinol (Lausanne)	WB
Jiajia Duan	36633130	Mol Med Rep	IF

## Storage

**Storage:**  
Store at -20°C. Stable for one year after shipment.  
**Storage Buffer:**  
PBS with 0.02% sodium azide and 50% glycerol pH 7.3.  
Aliquoting is unnecessary for -20°C storage

For technical support and original validation data for this product please contact:

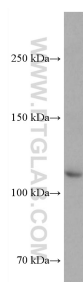
T: 4006900926

E: [Proteintech-CN@ptglab.com](mailto:Proteintech-CN@ptglab.com)

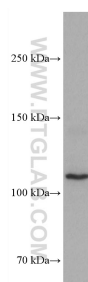
W: [ptgcn.com](http://ptgcn.com)

**This product is exclusively available under Proteintech Group brand and is not available to purchase from any other manufacturer.**

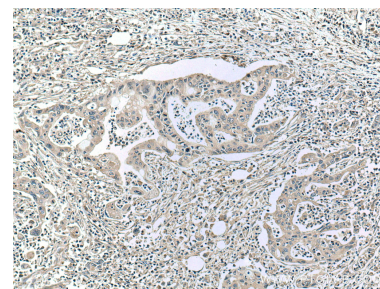
## Selected Validation Data



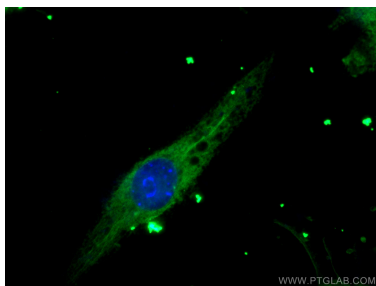
HEK-293 cells were subjected to SDS PAGE followed by western blot with 67072-1-Ig (ASK1 antibody) at dilution of 1:3000 incubated at room temperature for 1.5 hours.



HSC-T6 cells were subjected to SDS PAGE followed by western blot with 67072-1-Ig (ASK1 antibody) at dilution of 1:3000 incubated at room temperature for 1.5 hours.



Immunohistochemical analysis of paraffin-embedded human pancreas cancer tissue slide using 67072-1-Ig (ASK1 antibody) at dilution of 1:300 (under 10x lens. Heat mediated antigen retrieval with Tris-EDTA buffer (pH 9.0).



Immunofluorescent analysis of (-20°C Ethanol) fixed RAW 264.7 cells using ASK1 antibody (67072-1-Ig, Clone: 1C3A10 ) at dilution of 1:200 and CoraLite®488-Conjugated Goat Anti-Mouse IgG(H+L).