

ATF5 Monoclonal antibody, PBS Only

Catalog Number: 67066-1-PBS

Basic Information

Catalog Number:	67066-1-PBS	GenBank Accession Number:	BC005174	Purification Method:	Protein A purification
Size:	1 mg/ml	GeneID (NCBI):	22809	CloneNo.:	1E5B6
Source:	Mouse	UNIPROT ID:	Q9Y2D1		
Isotype:	IgG2b	Full Name:	activating transcription factor 5		
Immunogen Catalog Number:	AG7214	Calculated MW:	31 kDa		
		Observed MW:	30-35 kDa		

Applications

Tested Applications:
WB, Indirect ELISA

Species Specificity:
Human

Background Information

ATF5, also named as Activating transcription factor 5, is a 282 amino acid protein, which belongs to the bZIP family. ATF5 is widely expressed with higher expression levels in liver. ATF5 is actively transported to the centrosome and accumulated in the pericentriolar material (PCM) during G1 to M phase via a microtubule-dependent mechanism. During late telophase and cytokinesis, it translocates from the centrosome to the midbody (PMID: 26213385). ATF5 as a transcription factor that either stimulates or represses gene transcription through binding of different DNA regulatory elements such as cAMP response element (CRE) (consensus: 5'-GTGACGT[AC][AG]-3'), ATF5-specific response element (ARE) (consensus: 5'-C[CT]TCT[CT]CCTT[AT]-3') but also the amino acid response element (AARE), present in many viral and cellular promoters. Critically ATF5 is involved, often in a cell type-dependent manner, in cell survival, proliferation, and differentiation (PubMed:10373550, PubMed:15358120, PubMed:21212266, PubMed:20654631).

Storage

Storage:
Store at -80°C.

The product is shipped with ice packs. Upon receipt, store it immediately at -80°C

Storage Buffer:
PBS Only

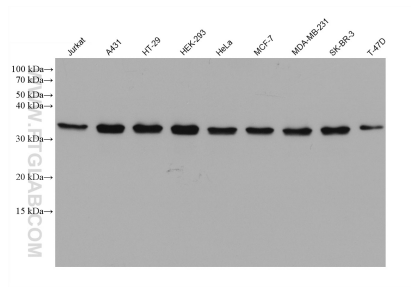
For technical support and original validation data for this product please contact:

T: 4006900926

E: Proteintech-CN@ptglab.comW: ptgcn.com

This product is exclusively available under Proteintech Group brand and is not available to purchase from any other manufacturer.

Selected Validation Data



Various lysates were subjected to SDS PAGE followed by western blot with 67066-1-Ig (ATF5 antibody) at dilution of 1:8000 incubated at room temperature for 1.5 hours. This data was developed using the same antibody clone with 67066-1-PBS in a different storage buffer formulation.