

For Research Use Only

Cyclin H Monoclonal antibody

Catalog Number: 67065-1-Ig 1 Publications



Basic Information

Catalog Number:

67065-1-Ig

Size:

2200 µg/ml

Source:

Mouse

Isotype:

IgG2a

Immunogen Catalog Number:

AG28556

GenBank Accession Number:

BC005280

GeneID (NCBI):

902

UNIPROT ID:

P51946

Full Name:

cyclin H

Calculated MW:

38 kDa

Observed MW:

38 kDa

Purification Method:

Protein A purification

CloneNo.:

2C5G11

Recommended Dilutions:

WB 1:2000-1:10000

IHC 1:500-1:1000

IF/ICC 1:200-1:800

Applications

Tested Applications:

WB, IHC, IF/ICC, FC (Intra), ELISA

Cited Applications:

WB

Species Specificity:

human, mouse, rat

Cited Species:

mouse

Note-IHC: suggested antigen retrieval with TE buffer pH 9.0; (*) Alternatively, antigen retrieval may be performed with citrate buffer pH 6.0

Positive Controls:

WB : HeLa cells, HEK-293 cells, HepG2 cells, Jurkat cells, HSC-T6 cells, MCF-7 cells, NCCIT cells, HT-1080 cells, LNCaP cells

IHC : human breast cancer tissue,

IF/ICC : PC-3 cells,

Background Information

Notable Publications

Author	Pubmed ID	Journal	Application
Zhe Yang	36229075	Genes Dev	WB

Storage

Storage:

Store at -20°C. Stable for one year after shipment.

Storage Buffer:

PBS with 0.02% sodium azide and 50% glycerol pH 7.3.

Aliquoting is unnecessary for -20°C storage

For technical support and original validation data for this product please contact:

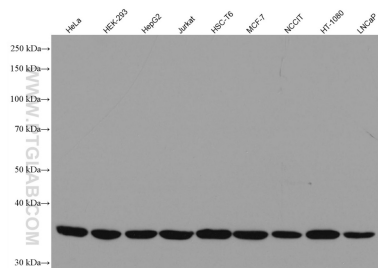
T: 4006900926

E: Proteintech-CN@ptglab.com

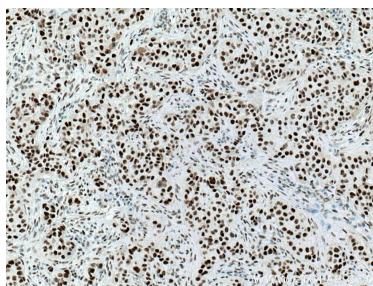
W: ptgcn.com

This product is exclusively available under Proteintech Group brand and is not available to purchase from any other manufacturer.

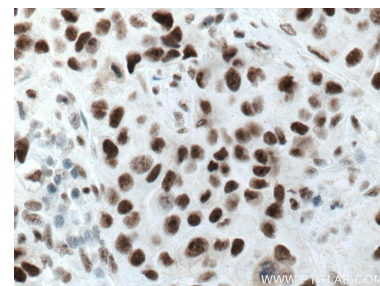
Selected Validation Data



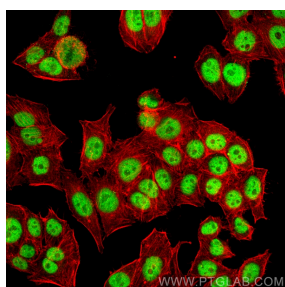
Various lysates were subjected to SDS PAGE followed by western blot with 67065-1-Ig (Cyclin H antibody) at dilution of 1:10000 incubated at room temperature for 1.5 hours.



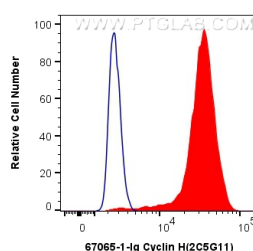
Immunohistochemical analysis of paraffin-embedded human breast cancer tissue slide using 67065-1-Ig (Cyclin H antibody) at dilution of 1:800 (under 10x lens). Heat mediated antigen retrieval with Tris-EDTA buffer (pH 9.0).



Immunohistochemical analysis of paraffin-embedded human breast cancer tissue slide using 67065-1-Ig (Cyclin H antibody) at dilution of 1:800 (under 40x lens). Heat mediated antigen retrieval with Tris-EDTA buffer (pH 9.0).



Immunofluorescent analysis of (4% PFA) fixed PC-3 cells using Cyclin H antibody (67065-1-Ig, Clone: 2C5G11) at dilution of 1:400 and CoraLite®488-Conjugated AffiniPure Goat Anti-Mouse IgG(H+L), CL594-Phalloidin (red).



1X10⁶ PC-3 cells were intracellularly stained with 0.4 ug Anti-Human Cyclin H (67065-1-Ig, Clone:2C5G11) and CoraLite®488-Conjugated AffiniPure Goat Anti-Mouse IgG(H+L) at dilution 1:1000 (red), or 0.4 ug Mouse IgG2a Isotype Control (C1.18.4) (65208-1-Ig, Clone: C1.18.4) (blue). Cells were fixed and permeabilized with Transcription Factor Staining Buffer Kit (PF00011).