

For Research Use Only

# C1QA Monoclonal antibody

Catalog Number: 67063-1-Ig **8 Publications**



## Basic Information

<b>Catalog Number:</b> 67063-1-Ig	<b>GenBank Accession Number:</b> BC030153	<b>Purification Method:</b> Protein G purification
<b>Source:</b> Mouse	<b>GeneID (NCBI):</b> 712	<b>CloneNo.:</b> 1B10E3
<b>Isotype:</b> IgG1	<b>UNIPROT ID:</b> P02745	<b>Recommended Dilutions:</b> WB: 1:5000-1:50000 IHC: 1:500-1:2000 IF/ICC: 1:200-1:800
<b>Immunogen Catalog Number:</b> AG28622	<b>Full Name:</b> complement component 1, q subcomponent, A chain	
	<b>Calculated MW:</b> 245 aa, 26 kDa	
	<b>Observed MW:</b> 30 kDa	

## Applications

<b>Tested Applications:</b> WB, IHC, IF/ICC, ELISA	<b>Positive Controls:</b> WB : human plasma tissue, human blood tissue IHC : human liver tissue, IF/ICC : HepG2 cells,
<b>Cited Applications:</b> WB, IHC, IF, IP	
<b>Species Specificity:</b> human	
<b>Cited Species:</b> human, mouse	
<b>Note-IHC: suggested antigen retrieval with TE buffer pH 9.0; (*) Alternatively, antigen retrieval may be performed with citrate buffer pH 6.0</b>	

## Background Information

The first component of complement, C1, is a calcium-dependent complex of the 3 subcomponents C1q, C1r, and C1s. C1q is composed of 18 polypeptide chains: six A-chains, six B-chains, and six C-chains. Each chain contains a collagen-like region located near the N terminus and a C-terminal globular region. Deficiency of C1q has been associated with lupus erythematosus and glomerulonephritis. This antibody is raised against C1qA which is the A-chain polypeptide of human complement subcomponent C1q.

## Notable Publications

Author	Pubmed ID	Journal	Application
Hanji Huang	33707956	Onco Targets Ther	WB
Han Li	36611882	Cells	IF
Haibo Zhao	40600952	FASEB J	IHC

## Storage

**Storage:**  
Store at -20°C. Stable for one year after shipment.  
**Storage Buffer:**  
PBS with 0.02% sodium azide and 50% glycerol, pH7.3  
Aliquoting is unnecessary for -20°C storage

For technical support and original validation data for this product please contact:

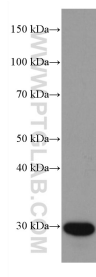
T: 4006900926

E: [Proteintech-CN@ptglab.com](mailto:Proteintech-CN@ptglab.com)

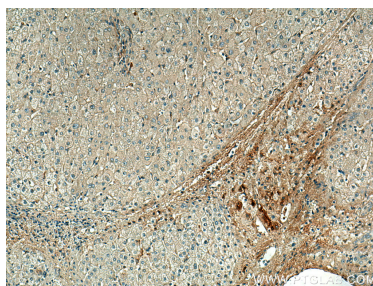
W: [ptgcn.com](http://ptgcn.com)

**This product is exclusively available under Proteintech Group brand and is not available to purchase from any other manufacturer.**

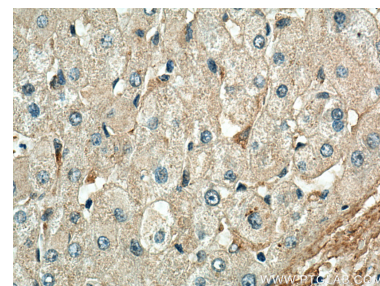
## Selected Validation Data



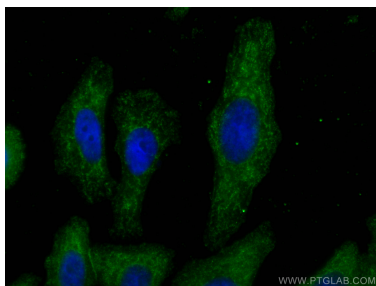
human plasma were subjected to SDS PAGE followed by western blot with 67063-1-Ig (C1QA antibody) at dilution of 1:10000 incubated at room temperature for 1.5 hours.



Immunohistochemical analysis of paraffin-embedded human liver tissue slide using 67063-1-Ig (C1QA antibody) at dilution of 1:1000 (under 10x lens). Heat mediated antigen retrieval with Tris-EDTA buffer (pH 9.0).



Immunohistochemical analysis of paraffin-embedded human liver tissue slide using 67063-1-Ig (C1QA antibody) at dilution of 1:1000 (under 40x lens). Heat mediated antigen retrieval with Tris-EDTA buffer (pH 9.0).



Immunofluorescent analysis of (-20°C Ethanol) fixed HepG2 cells using C1QA antibody (67063-1-Ig, Clone: 1B10E3 ) at dilution of 1:400 and CoraLite®488-Conjugated Goat Anti-Mouse IgG(H+L).