

# PDE4D Monoclonal antibody, PBS Only

Catalog Number: 67062-1-PBS

## Basic Information

## Catalog Number:

67062-1-PBS

## Size:

1mg/ml

## Source:

Mouse

## Isotype:

IgG1

## Immunogen Catalog Number:

AG8302

## GenBank Accession Number:

BC036319

## GeneID (NCBI):

5144

## UNIPROT ID:

Q08499

## Full Name:

phosphodiesterase 4D, cAMP-specific  
(phosphodiesterase E3 dunc  
homolog, Drosophila)

## Calculated MW:

809 aa, 91 kDa

## Observed MW:

91-110 kDa, 66-84 kDa

## Purification Method:

Protein G purification

## CloneNo.:

1C4B9

## Applications

## Tested Applications:

WB, IF, Indirect ELISA

## Species Specificity:

human, mouse, rat, pig

## Background Information

PDE4D(cAMP-specific 3',5'-cyclic phosphodiesterase 4D) is also known as DPDE3, PDE43 and belongs to the cyclic nucleotide phosphodiesterase family and PDE4 subfamily. PDE4D subtype may be of particular importance as an antidepressant target in that it is regulated by repeated treatment with both norepinephrine and serotonin reuptake inhibitors as well as by the PDE4 inhibitor rolipram (PMID:16730340). It has some isoforms and all the PDE4D isoforms are expressed in healthy adult human hippocampus and in the hippocampus from a patient with advanced Alzheimer disease (PMID:17353396). Bands of 90-110 kDa correspond to the long PDE4D isoforms, and bands of 66-84 kDa are the short PDE4D isoforms (PMID: 17215491).

## Storage

## Storage:

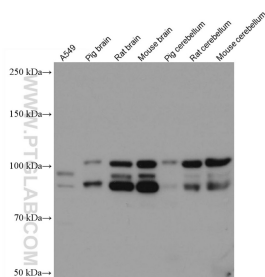
Store at -80°C.

**The product is shipped with ice packs. Upon receipt, store it immediately at -80°C**

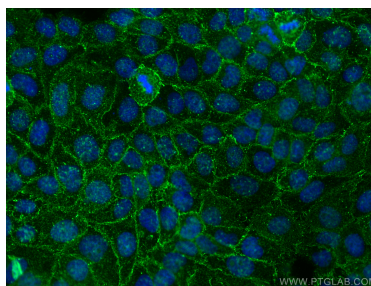
## Storage Buffer:

PBS Only

## Selected Validation Data



Various lysates were subjected to SDS PAGE followed by western blot with 67062-1-Ig (PDE4D antibody) at dilution of 1:5000 incubated at room temperature for 1.5 hours. This data was developed using the same antibody clone with 67062-1-PBS in a different storage buffer formulation.



Immunofluorescent analysis of (4% PFA) fixed A431 cells using PDE4D antibody (67062-1-Ig, Clone: 1C4B9) at dilution of 1:1600 and CoraLite®488-Conjugated AffiniPure Goat Anti-Mouse IgG(H+L) (SA00013-1). This data was developed using the same antibody clone with 67062-1-PBS in a different storage buffer formulation.