

For Research Use Only

# PDE4D Monoclonal antibody

Catalog Number: 67062-1-Ig **1 Publications**



## Basic Information

<b>Catalog Number:</b> 67062-1-Ig	<b>GenBank Accession Number:</b> BC036319	<b>Purification Method:</b> Protein G purification
<b>Size:</b> 1600 ug/ml	<b>GeneID (NCBI):</b> 5144	<b>CloneNo.:</b> 1C4B9
<b>Source:</b> Mouse	<b>UNIPROT ID:</b> Q08499	<b>Recommended Dilutions:</b> WB 1:3000-1:10000 IF/ICC 1:800-1:3200
<b>Isotype:</b> IgG1	<b>Full Name:</b> phosphodiesterase 4D, cAMP-specific (phosphodiesterase E3 dunce homolog, Drosophila)	
<b>Immunogen Catalog Number:</b> AG8302	<b>Calculated MW:</b> 809 aa, 91 kDa	
	<b>Observed MW:</b> 91-110 kDa, 66-84 kDa	

## Applications

<b>Tested Applications:</b> WB, IF/ICC, ELISA	<b>Positive Controls:</b>
<b>Cited Applications:</b> WB	<b>WB :</b> A549 cells, pig cerebellum tissue, rat brain tissue, rat cerebellum tissue, mouse brain tissue, pig brain tissue, mouse cerebellum tissue
<b>Species Specificity:</b> human, mouse, rat, pig	<b>IF/ICC :</b> A431 cells,
<b>Cited Species:</b> human	

## Background Information

PDE4D(cAMP-specific 3',5'-cyclic phosphodiesterase 4D) is also known as DPDE3, PDE43 and belongs to the cyclic nucleotide phosphodiesterase family and PDE4 subfamily. PDE4D subtype may be of particular importance as an antidepressant target in that it is regulated by repeated treatment with both norepinephrine and serotonin reuptake inhibitors as well as by the PDE4 inhibitor rolipram (PMID:16730340). It has some isoforms and all the PDE4D isoforms are expressed in healthy adult human hippocampus and in the hippocampus from a patient with advanced Alzheimer disease (PMID:17353396). Bands of 90-110 kDa correspond to the long PDE4D isoforms, and bands of 66-84 kDa are the short PDE4D isoforms (PMID: 17215491).

## Notable Publications

Author	Pubmed ID	Journal	Application
Yimin Sun	36366731	Cancer Med	WB

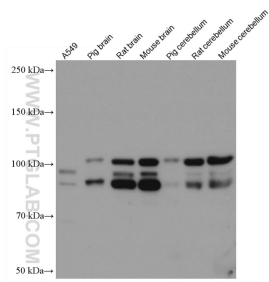
## Storage

**Storage:**  
Store at -20°C. Stable for one year after shipment.  
**Storage Buffer:**  
PBS with 0.02% sodium azide and 50% glycerol pH 7.3.  
**Aliquoting is unnecessary for -20°C storage**

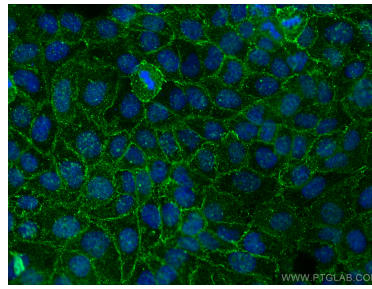
For technical support and original validation data for this product please contact:  
T: 4006900926 E: Proteintech-CN@ptglab.com W: ptgcn.com

This product is exclusively available under Proteintech Group brand and is not available to purchase from any other manufacturer.

## Selected Validation Data



Various lysates were subjected to SDS PAGE followed by western blot with 67062-1-Ig (PDE4D antibody) at dilution of 1:5000 incubated at room temperature for 1.5 hours.



Immunofluorescent analysis of (4% PFA) fixed A431 cells using PDE4D antibody (67062-1-Ig, Clone: 1C4B9) at dilution of 1:1600 and CoraLite®488-Conjugated AffiniPure Goat Anti-Mouse IgG(H+L) (SA00013-1).