

For Research Use Only

CNTROB Monoclonal antibody, PBS Only (Detector)

Catalog Number: 67061-1-PBS



Basic Information

Catalog Number:

67061-1-PBS

Size:

1mg/ml

Source:

Mouse

Isotype:

IgG1

Immunogen Catalog Number:

AG25447

GenBank Accession Number:

BC021134

GeneID (NCBI):

116840

UNIPROT ID:

Q8N137

Full Name:

centrobin, centrosomal BRCA2
interacting protein

Calculated MW:

903 aa, 101 kDa

Observed MW:

97 kDa

Purification Method:

Protein G purification

CloneNo.:

3D12A4

Applications

Tested Applications:

WB, IF/ICC, Cytometric bead array, Indirect ELISA

Species Specificity:

human, mouse, rat, pig

Background Information

Storage

Storage:

Store at -80°C.

The product is shipped with ice packs. Upon receipt, store it immediately at -80°C

Storage Buffer:

PBS Only

For technical support and original validation data for this product please contact:

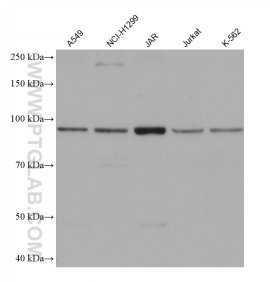
T: 4006900926

E: Proteintech-CN@ptglab.com

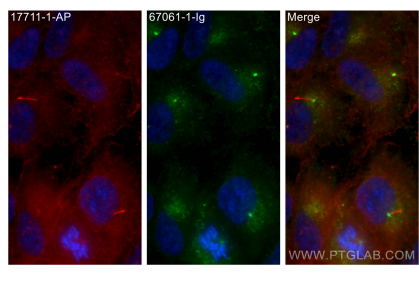
W: ptgcn.com

This product is exclusively available under Proteintech Group brand and is not available to purchase from any other manufacturer.

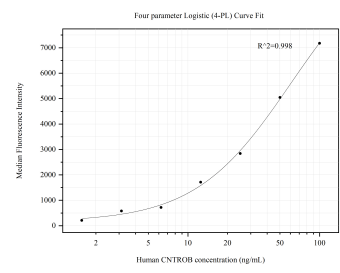
Selected Validation Data



Various lysates were subjected to SDS PAGE followed by western blot with 67061-1-Ig (CNTROB antibody) at dilution of 1:10000 incubated at room temperature for 1.5 hours. This data was developed using the same antibody clone with 67061-1-PBS in a different storage buffer formulation.



Immunofluorescent analysis of (-20°C Methanol) fixed hTERT-RPE1 cells using CNTROB antibody (67061-1-Ig, Clone: 3D12A4) at dilution of 1:350 and CoraLite®488-Conjugated AffiniPure Goat Anti-Mouse IgG(H+L), ARL13B antibody (17711-1-AP, red). This data was developed using the same antibody clone with 67061-1-PBS in a different storage buffer formulation.



Cytometric bead array standard curve of MP50605-2, CNTROB Monoclonal Matched Antibody Pair, PBS Only. Capture antibody: 67061-4-PBS. Detection antibody: 67061-1-PBS. Standard: Ag25447. Range: 1.563-100 ng/mL