

For Research Use Only

IL-4RA/CD124 Monoclonal antibody

Catalog Number: 67051-1-Ig



Basic Information

Catalog Number:

67051-1-Ig

Concentration:

1000 ug/ml

Source:

Mouse

Isotype:

IgG1

Immunogen Catalog Number:

AG28411

GenBank Accession Number:

NM_000418

GeneID (NCBI):

3566

UNIPROT ID:

P24394

Full Name:

interleukin 4 receptor

Calculated MW:

90 kDa

Observed MW:

120 kDa

Purification Method:

Protein G purification

CloneNo.:

1E4C11

Recommended Dilutions:

WB 1:5000-1:50000

Applications

Tested Applications:

WB, ELISA

Species Specificity:

human

Positive Controls:

WB : A431 cells, Jurkat cells, MG-63 cells, SCaBER cells, HT-1376 cells, Raji cells, Ramos cells, Daudi cells, HUVEC cells

Background Information

IL-4 receptor alpha chain (IL-4RA), also known as CD124, is a transmembrane glycoprotein expressed on a wide variety of hematopoietic and non-hematopoietic cells. It is a receptor for both IL-4 and IL-13. IL-4RA can complex with the common gamma chain (IL-2R gamma or CD132) and utilizes JAK1 and JAK2 for signal transduction, while complexes of IL-4RA with IL-13RA1 subunit mediate signals via JAK2 and Tyk2. The IL-4 response is involved in promoting Th2 differentiation. The IL-4/IL-13 responses are involved in regulating IgE production and, chemokine and mucus production at sites of allergic inflammation.

Storage

Storage:

Store at -20°C. Stable for one year after shipment.

Storage Buffer:

PBS with 0.02% sodium azide and 50% glycerol, pH7.3

Aliquoting is unnecessary for -20°C storage

For technical support and original validation data for this product please contact:

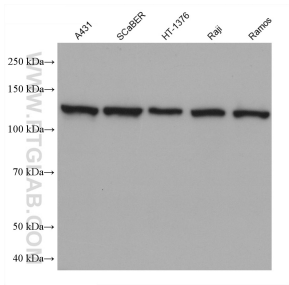
T: 4006900926

E: Proteintech-CN@ptglab.com

W: ptgcn.com

This product is exclusively available under Proteintech Group brand and is not available to purchase from any other manufacturer.

Selected Validation Data



Various lysates were subjected to SDS PAGE followed by western blot with 67051-1-Ig (IL-4RA/CD124 antibody) at dilution of 1:10000 incubated at room temperature for 1.5 hours.