

For Research Use Only

# Cyclin D2 Monoclonal antibody

Catalog Number: 67048-1-Ig **6 Publications**



## Basic Information

Catalog Number:

67048-1-Ig

Size:

2300  $\mu$ g/ml

Source:

Mouse

Isotype:

IgG2a

Immunogen Catalog Number:

AG25190

GenBank Accession Number:

BC010958

GeneID (NCBI):

894

UNIPROT ID:

P30279

Full Name:

cyclin D2

Calculated MW:

32 kDa

Observed MW:

30 kDa

Purification Method:

Protein A purification

CloneNo.:

1A12A8

Recommended Dilutions:

WB 1:1000-1:5000

## Applications

Tested Applications:

WB, ELISA

Cited Applications:

WB

Species Specificity:

Human, mouse

Cited Species:

human, mouse

Positive Controls:

WB : HEK-293 cells, NIH/3T3 cells, U2OS cells, MCF-7 cells, Caco-2 cells

## Background Information

CCND2 belongs to the highly conserved cyclin family, whose members are characterized by a dramatic periodicity in protein abundance through the cell cycle. Cyclins function as regulators of CDK kinases. CCND2 forms a complex with and functions as a regulatory subunit of CDK4 or CDK6, whose activity is required for cell cycle G1/S transition. CCND2 has been shown to interact with and be involved in the phosphorylation of tumor suppressor protein Rb. High level expression of CCND2 was observed in ovarian and testicular tumors.

## Notable Publications

| Author          | Pubmed ID | Journal                    | Application |
|-----------------|-----------|----------------------------|-------------|
| Shuaishuai Zhuo | 33993193  | Cell Death Dis             | WB          |
| Pan Jiang       | 35968334  | Am J Cancer Res            | WB          |
| Xiang Fei       | 39235611  | Cancer Chemother Pharmacol | WB          |

## Storage

Storage:

Store at -20°C.

Storage Buffer:

PBS with 0.02% sodium azide and 50% glycerol pH 7.3.

Aliquoting is unnecessary for -20°C storage

For technical support and original validation data for this product please contact:

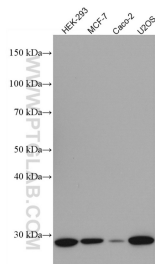
T: 4006900926

E: [Proteintech-CN@ptglab.com](mailto:Proteintech-CN@ptglab.com)

W: [ptgcn.com](http://ptgcn.com)

This product is exclusively available under Proteintech Group brand and is not available to purchase from any other manufacturer.

## Selected Validation Data



Various lysates were subjected to SDS PAGE followed by western blot with 67048-1-Ig (CCND2 antibody) at dilution of 1:2500 incubated at room temperature for 1.5 hours.