

## COMMD5 Monoclonal antibody

Catalog Number: 67043-1-Ig 2 Publications

## Basic Information

<b>Catalog Number:</b> 67043-1-Ig	<b>GenBank Accession Number:</b> BC003055	<b>Purification Method:</b> Protein A purification
<b>Size:</b> 2200 µg/ml	<b>GeneID (NCBI):</b> 28991	<b>CloneNo.:</b> 1E10G6
<b>Source:</b> Mouse	<b>UNIPROT ID:</b> Q9GZQ3	<b>Recommended Dilutions:</b> WB 1:2000-1:6000
<b>Isotype:</b> IgG2a	<b>Full Name:</b> COMM domain containing 5	
<b>Immunogen Catalog Number:</b> AG18464	<b>Calculated MW:</b> 25 kDa	
	<b>Observed MW:</b> 15 kDa	

## Applications

<b>Tested Applications:</b> WB, ELISA	<b>Positive Controls:</b> WB : human heart tissue, rat heart tissue, MCF-7 cells, HEK-293 cells
<b>Cited Applications:</b> WB	
<b>Species Specificity:</b> Human, Rat	
<b>Cited Species:</b> human	

## Background Information

COMM domain containing 5 (COMMD5, synonyms: HCARG, HT002) is a hypertension-related calcium-regulated gene. COMMD5 is negatively regulated by extracellular calcium concentration, and its basal mRNA levels were higher in hypertensive animals. Tissue distribution of COMMD5 shows a preponderance in the heart, stomach, jejunum, kidney (tubular fraction), liver, and adrenal gland (mainly in the medulla). COMMD5 mRNA is significantly more expressed in adult than in fetal organs, and its levels are decreased in tumors and cancerous cell lines. COMMD5 protein has no transmembrane domain, but contains 67% -helix content, a calcium-binding site, four putative "leucine zipper" motifs, and a nuclear receptor-binding domain. At the subcellular level, COMMD5 shows a nuclear localization.

## Notable Publications

Author	Pubmed ID	Journal	Application
Jianyun Liu	37543430	Aging (Albany NY)	WB
Michael D Healy	37172566	Cell	WB

## Storage

**Storage:**  
Store at -20°C.  
**Storage Buffer:**  
 PBS with 0.02% sodium azide and 50% glycerol pH 7.3.  
 Aliquoting is unnecessary for -20°C storage

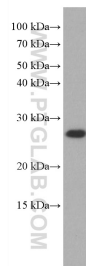
For technical support and original validation data for this product please contact:

T: 4006900926

E: [Proteintech-CN@ptglab.com](mailto:Proteintech-CN@ptglab.com)W: [ptgcn.com](http://ptgcn.com)

This product is exclusively available under Proteintech Group brand and is not available to purchase from any other manufacturer.

## Selected Validation Data



human heart tissue were subjected to SDS PAGE followed by western blot with 67043-1-Ig (COMMD5 antibody) at dilution of 1:5000 incubated at room temperature for 1.5 hours.