

For Research Use Only

MED30 Monoclonal antibody, PBS Only (Capture)

Catalog Number: 67038-2-PBS



Basic Information

Catalog Number:

67038-2-PBS

Source:

Mouse

Isotype:

IgG1

Immunogen Catalog Number:

AG10235

GenBank Accession Number:

BC008226

GeneID (NCBI):

90390

UNIPROT ID:

Q96HR3

Full Name:

mediator complex subunit 30

Calculated MW:

178 aa, 20 kDa

Purification Method:

Protein G purification

CloneNo.:

3E4A7

Applications

Tested Applications:

Cytometric bead array, Sandwich ELISA, Indirect ELISA

Species Specificity:

human

Background Information

Storage

Storage:

Store at -80°C.

The product is shipped with ice packs. Upon receipt, store it immediately at -80°C

Storage Buffer:

PBS only, pH7.3

For technical support and original validation data for this product please contact:

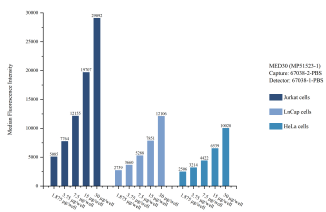
T: 4006900926

E: Proteintech-CN@ptglab.com

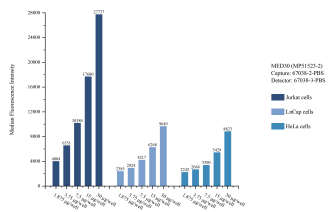
W: ptgcn.com

This product is exclusively available under Proteintech Group brand and is not available to purchase from any other manufacturer.

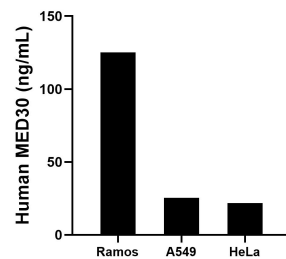
Selected Validation Data



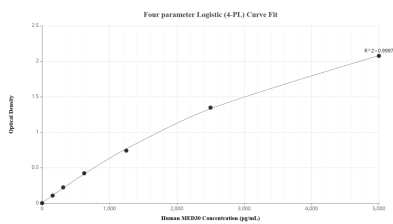
Cytometric bead array sample test of MP51523-1, MED30 Monoclonal Matched Antibody Pair, PBS Only. Capture antibody: 67038-2-PBS. Detection antibody: 67038-1-PBS.



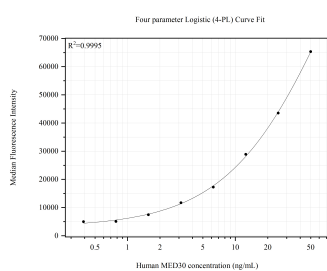
Cytometric bead array sample test of MP51523-2, MED30 Monoclonal Matched Antibody Pair, PBS Only. Capture antibody: 67038-2-PBS. Detection antibody: 67038-3-PBS.



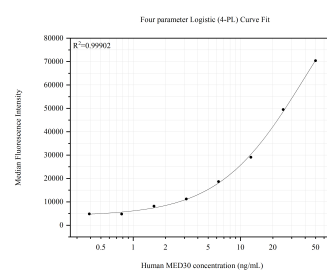
The mean MED30 concentration was determined to be 125.2 ng/mL in Ramos cell extract based on a 2.3 mg/mL extract load, 25.5 ng/mL in A549 cell extract based on a 1.2 mg/mL extract load and 21.9 ng/mL in HeLa cell extract based on a 1.2 mg/mL extract load.



Sandwich ELISA standard curve of MP51523-2, Human MED30 Monoclonal Matched Antibody Pair - PBS only. 67038-2-PBS was coated to a plate as the capture antibody and incubated with serial dilutions of standard Ag10235. 67038-3-PBS was HRP conjugated as the detection antibody. Range: 156-5000 pg/mL



Cytometric bead array standard curve of MP51523-1, MED30 Monoclonal Matched Antibody Pair, PBS Only. Capture antibody: 67038-2-PBS. Detection antibody: 67038-1-PBS. Standard: Ag10235. Range: 0.391-50 ng/mL.



Cytometric bead array standard curve of MP51523-2, MED30 Monoclonal Matched Antibody Pair, PBS Only. Capture antibody: 67038-2-PBS. Detection antibody: 67038-3-PBS. Standard: Ag10235. Range: 0.391-50 ng/mL