

CYP1B1 Monoclonal antibody

Catalog Number: 67033-1-Ig

Basic Information

Catalog Number:

67033-1-Ig

Size:

800 ug/ml

Source:

Mouse

Isotype:

IgG1

Immunogen Catalog Number:

AG13380

GenBank Accession Number:

BC012049

GeneID (NCBI):

1545

UNIPROT ID:

Q16678

Full Name:

cytochrome P450, family 1, subfamily
B, polypeptide 1

Calculated MW:

61 kDa

Observed MW:

52 kDa

Purification Method:

Protein A purification

CloneNo.:

1G8D4

Recommended Dilutions:

WB 1:3000-1:10000

IHC 1:500-1:2000

Applications

Tested Applications:

WB, IHC, ELISA

Species Specificity:

human, mouse, rat, pig

**Note-IHC: suggested antigen retrieval with
TE buffer pH 9.0; (*) Alternatively, antigen
retrieval may be performed with citrate
buffer pH 6.0**

Positive Controls:

WB : HeLa cells, PC-3 cells, rat brain tissue, mouse
brain tissue, pig brain tissue, T-47D cells, MCF-7 cells

IHC : mouse heart tissue, human rectal cancer tissue,
mouse brain tissue

Background Information

Cytochrome P450 CYP1B1 is a recently cloned dioxin-inducible form of the cytochrome P450 family of xenobiotic metabolizing enzymes. CYP1B1 was found to be expressed at a high frequency in a wide range of human cancers of different histogenetic types, including cancers of the breast, colon, lung, esophagus, skin, lymph node, brain, and testis. There was no detectable immunostaining for CYP1B1 in normal tissues (PMID:9230218). CYP1B1 is a 60 kDa protein that it also can be detected a band of 51 kDa or 57 kDa through the western blot (PMID:9525272; PMID: 9525272).

Storage

Storage:

Store at -20°C. Stable for one year after shipment.

Storage Buffer:

PBS with 0.02% sodium azide and 50% glycerol pH 7.3.

Aliquoting is unnecessary for -20°C storage

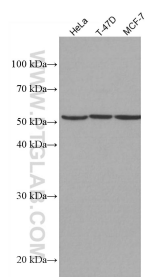
For technical support and original validation data for this product please contact:

T: 4006900926

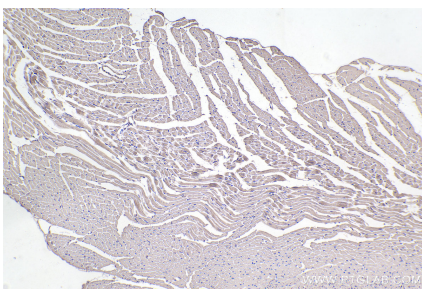
E: Proteintech-CN@ptglab.comW: ptgcn.com

**This product is exclusively available under Proteintech
Group brand and is not available to purchase from any
other manufacturer.**

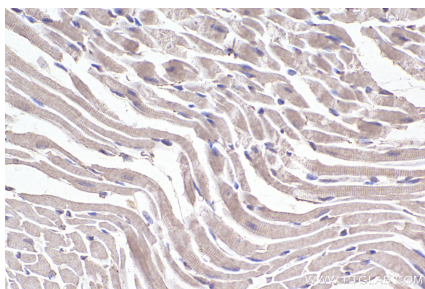
Selected Validation Data



Various lysates were subjected to SDS PAGE followed by western blot with 67033-1-Ig (CYP1B1 antibody) at dilution of 1:6000 incubated at room temperature for 1.5 hours.



Immunohistochemical analysis of paraffin-embedded mouse heart tissue slide using 67033-1-Ig (CYP1B1 antibody) at dilution of 1:1000 (under 10x lens). Heat mediated antigen retrieval with Tris-EDTA buffer (pH 9.0).



Immunohistochemical analysis of paraffin-embedded mouse heart tissue slide using 67033-1-Ig (CYP1B1 antibody) at dilution of 1:1000 (under 40x lens). Heat mediated antigen retrieval with Tris-EDTA buffer (pH 9.0).