

# Ribosomal protein L4 Monoclonal antibody

Catalog Number: 67028-1-Ig **3 Publications**

## Basic Information

### Catalog Number:

67028-1-Ig

### Size:

1000 µg/ml

### Source:

Mouse

### Isotype:

IgG1

### Immunogen Catalog Number:

AG28728

### GenBank Accession Number:

BC009888

### GeneID (NCBI):

6124

### UNIPROT ID:

P36578

### Full Name:

ribosomal protein L4

### Calculated MW:

48 kDa

### Observed MW:

48 kDa

### Purification Method:

Protein A purification

### CloneNo.:

3C7A8

### Recommended Dilutions:

WB 1:5000-1:50000

IHC 1:1000-1:4000

IF/ICC 1:200-1:800

## Applications

### Tested Applications:

WB, IHC, IF/ICC, FC (Intra), ELISA

### Cited Applications:

WB, IP

### Species Specificity:

human, mouse, rat

### Cited Species:

human, mouse

**Note-IHC: suggested antigen retrieval with TE buffer pH 9.0; (\*) Alternatively, antigen retrieval may be performed with citrate buffer pH 6.0**

### Positive Controls:

**WB** : HEK-293 cells, HeLa cells, Jurkat cells, HSC-T6 cells, NIH/3T3 cells, MCF-7 cells, RAW 264.7 cells

**IHC** : human lymphoma tissue,

**IF/ICC** : HepG2 cells,

## Background Information

60S ribosomal protein L4 is encoded by RPL4 (or RPL1) gene. RPL4 is a component of 60S subunit of ribosome, and belongs to the L4E family. By interacting with c-Myb, RPL4 plays a important role in c-myc expression in response to growth factor and nutritional signals. Recently RPL4 was reported to be able to increase efficiency of viral recoding sequence.

## Notable Publications

Author	Pubmed ID	Journal	Application
Matthias M Zimmer	34893599	Nat Commun	WB, IP
Dingfeng Zou	38657611	Dev Cell	WB
Sneha Shah	32234480	Cell Rep	WB

## Storage

### Storage:

Store at -20°C. Stable for one year after shipment.

### Storage Buffer:

PBS with 0.02% sodium azide and 50% glycerol pH 7.3.

Aliquoting is unnecessary for -20°C storage

For technical support and original validation data for this product please contact:

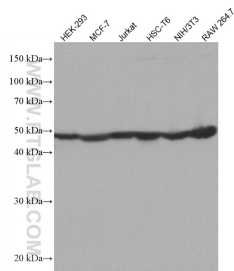
T: 4006900926

E: [Proteintech-CN@ptglab.com](mailto:Proteintech-CN@ptglab.com)

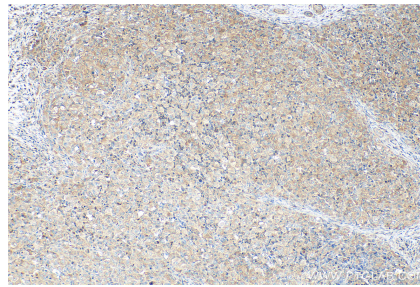
W: [ptgcn.com](http://ptgcn.com)

**This product is exclusively available under Proteintech Group brand and is not available to purchase from any other manufacturer.**

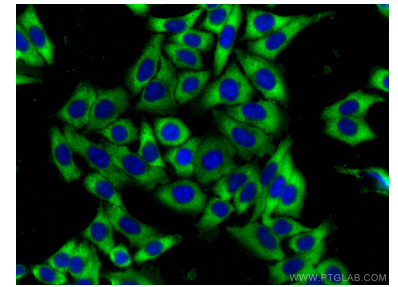
## Selected Validation Data



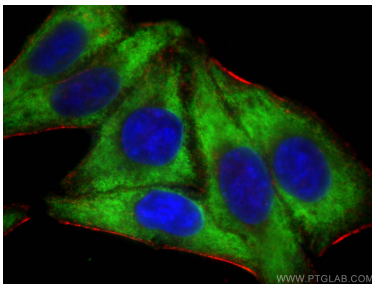
Various lysates were subjected to SDS PAGE followed by western blot with 67028-1-Ig (Ribosomal protein L4 antibody) at dilution of 1:10000 incubated at room temperature for 1.5 hours.



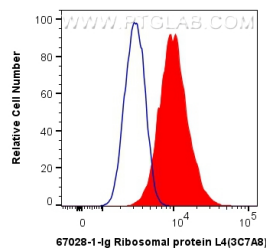
Immunohistochemical analysis of paraffin-embedded human lymphoma tissue slide using 67028-1-Ig (Ribosomal protein L4 antibody) at dilution of 1:2000 (under 10x lens). Heat mediated antigen retrieval with Tris-EDTA buffer (pH 9.0).



Immunofluorescent analysis of (-20°C Ethanol) fixed HepG2 cells using Ribosomal protein L4 antibody (67028-1-Ig, Clone: 3C7A8) at dilution of 1:400 and CoraLite®488-Conjugated AffiniPure Goat Anti-Mouse IgG(H+L).



Immunofluorescent analysis of (-20°C Ethanol) fixed HepG2 cells using Ribosomal protein L4 antibody (67028-1-Ig, Clone: 3C7A8) at dilution of 1:400 and Multi-rAb CoraLite® Plus 488-Goat Anti-Mouse Recombinant Secondary Antibody (H+L) (RGAM002), CL594-phalloidin (red).



1X10<sup>6</sup> HepG2 cells were intracellularly stained with 0.4 ug Anti-Human Ribosomal protein L4 (67028-1-Ig, Clone:3C7A8) and CoraLite®488-Conjugated AffiniPure Goat Anti-Mouse IgG(H+L) at dilution 1:1000 (red), or 0.4 ug Mouse IgG1 Isotype Control (MOPC-21) (65124-1-Ig, Clone: MOPC-21) (blue). Cells were fixed with 4% PFA and permeabilized with Flow Cytometry Perm Buffer (PF00011-C).