

For Research Use Only

PRC1 Monoclonal antibody

Catalog Number: 67027-1-Ig

Featured Product



Basic Information

Catalog Number:

67027-1-Ig

Concentration:

1000 ug/ml

Source:

Mouse

Isotype:

IgG1

Immunogen Catalog Number:

AG5907

GenBank Accession Number:

BC003138

GeneID (NCBI):

9055

UNIPROT ID:

O43663

Full Name:

protein regulator of cytokinesis 1

Calculated MW:

72 kDa

Observed MW:

66-72 kDa

Purification Method:

Protein A purification

CloneNo.:

1E1D5

Recommended Dilutions:

WB 1:2000-1:10000

IHC 1:200-1:1000

IF/ICC 1:400-1:1600

Applications

Tested Applications:

WB, IHC, IF/ICC, ELISA

Species Specificity:

human, mouse, rat

Note-IHC: suggested antigen retrieval with TE buffer pH 9.0; (*) Alternatively, antigen retrieval may be performed with citrate buffer pH 6.0

Positive Controls:

WB : HeLa cells, MCF-7 cells, HEK-293 cells, A549 cells, HepG2 cells, HSC-T6 cells, 4T1 cells

IHC : human breast cancer tissue, human lung cancer tissue

IF/ICC : HeLa cells,

Background Information

PRC1 (protein regulator of cytokinesis 1) is a microtubule-bundling protein that is involved in cytokinesis. Depletion of PRC1 leads to failed cytokinesis. PRC1 is located in the nucleus during interphase, and becomes associated with mitotic spindles in a highly dynamic manner during mitosis, and localizes to the cell mid-body during cytokinesis. PRC1 is a substrate of CDK1 and it was assumed that CDK1 phosphorylation blocks its activity during metaphase. Three isoforms of PRC1 exist due to the alternative splicing, with predictive molecular weight of 71.6 kDa, 70.2 kDa and 66.2 kDa, respectively. The dual bands between 66-72 kDa detected by this antibody may represent different forms of PRC1.

Storage

Storage:

Store at -20°C. Stable for one year after shipment.

Storage Buffer:

PBS with 0.02% sodium azide and 50% glycerol, pH7.3

Aliquoting is unnecessary for -20°C storage

For technical support and original validation data for this product please contact:

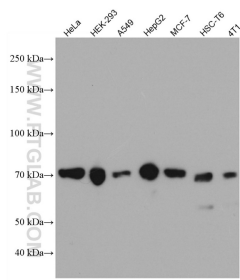
T: 4006900926

E: Proteintech-CN@ptglab.com

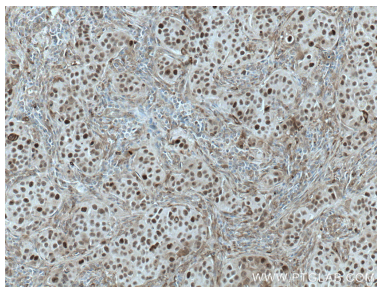
W: ptgcn.com

This product is exclusively available under Proteintech Group brand and is not available to purchase from any other manufacturer.

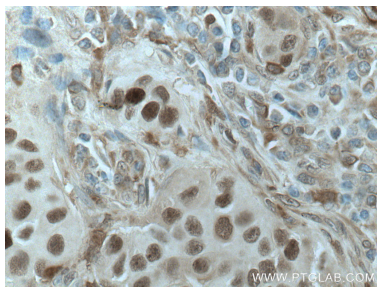
Selected Validation Data



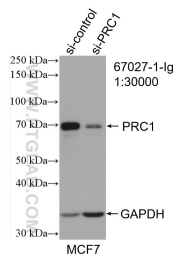
Various lysates were subjected to SDS PAGE followed by western blot with 67027-1-Ig (PRC1 antibody) at dilution of 1:5000 incubated at room temperature for 1.5 hours.



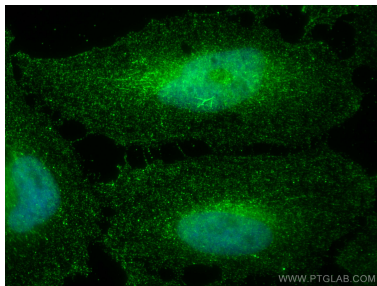
Immunohistochemical analysis of paraffin-embedded human breast cancer tissue slide using 67027-1-Ig (PRC1 antibody) at dilution of 1:500 (under 10x lens. Heat mediated antigen retrieval with Tris-EDTA buffer (pH 9.0).



Immunohistochemical analysis of paraffin-embedded human breast cancer tissue slide using 67027-1-Ig (PRC1 antibody) at dilution of 1:500 (under 40x lens. Heat mediated antigen retrieval with Tris-EDTA buffer (pH 9.0).



WB result of PRC1 antibody (67027-1-Ig; 1:30000; incubated at room temperature for 1.5 hours) with sh-Control and sh-PRC1 transfected MCF-7 cells.



Immunofluorescent analysis of (4% PFA) fixed HeLa cells using PRC1 antibody (67027-1-Ig, Clone: 1E1D5) at dilution of 1:800 and CoraLite®488-Conjugated AffiniPure Goat Anti-Mouse IgG(H+L).