

TIMELESS Monoclonal antibody

Catalog Number: 67022-1-Ig

Featured Product

1 Publications

Basic Information

Catalog Number:

67022-1-Ig

Size:

1900 µg/ml

Source:

Mouse

Isotype:

IgG1

Immunogen Catalog Number:

AG6283

GenBank Accession Number:

BC050557

GeneID (NCBI):

8914

UNIPROT ID:

Q9UNS1

Full Name:

timeless homolog (Drosophila)

Calculated MW:

139 kDa

Observed MW:

140 kDa

Purification Method:

Protein A purification

CloneNo.:

1B6G3

Recommended Dilutions:

WB 1:5000-1:50000

Applications

Tested Applications:

WB, FC (Intra), ELISA

Cited Applications:

WB

Species Specificity:

human, mouse, rat

Cited Species:

human, canine

Positive Controls:

WB : HeLa cells, U2OS cells, A549 cells, JAR cells, Jurkat cells, HSC-T6 cells, NIH/3T3 cells, HEK-293 cells, K-562 cells

Background Information

TIMELESS1 (TIM1) gene encodes protein timeless homolog belonging to timeless family. TIM1 is localized in nucleus and regulated by cell cycle. It expresses high levels in S, G2 and M phases, and low in G0 and G1 phases. TIM1 is involved in the circadian rhythm autoregulatory loop and is a crucial component of the circadian core oscillator, which includes the CRY proteins, CLOCK, NPAS2, etc. It is also involved in cell survival after DNA damage or replication stress and reported to play important role in epithelial cell morphogenesis and formation of branching tubules.

Notable Publications

Author	Pubmed ID	Journal	Application
Houqing Yin	37433364	Eur J Pharmacol	WB

Storage

Storage:

Store at -20°C. Stable for one year after shipment.

Storage Buffer:

PBS with 0.02% sodium azide and 50% glycerol pH 7.3.

Aliquoting is unnecessary for -20°C storage

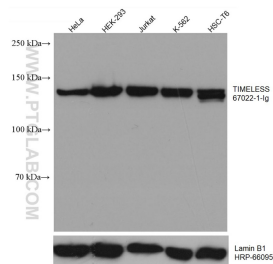
For technical support and original validation data for this product please contact:

T: 4006900926

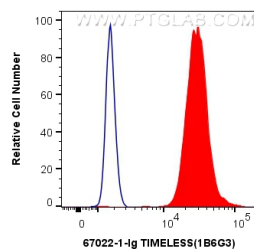
E: Proteintech-CN@ptglab.comW: ptgcn.com

This product is exclusively available under Proteintech Group brand and is not available to purchase from any other manufacturer.

Selected Validation Data



Various lysates were subjected to SDS PAGE followed by western blot with 67022-1-Ig (TIMELESS antibody) at dilution of 1:10000 incubated at room temperature for 1.5 hours. The membrane was stripped and reblotted with HRP-conjugated Lamin B1 Monoclonal antibody (HRP-66095) as loading control.



1X10⁶ HEK-293 cells were intracellularly stained with 0.4 ug Anti-Human TIMELESS (67022-1-Ig, Clone:1B6G3) and CoraLite®488-Conjugated AffiniPure Goat Anti-Mouse IgG(H+L) at dilution 1:1000 (red), or 0.4 ug Control Antibody. Cells were fixed and permeabilized with Transcription Factor Staining Buffer Kit (PF00011).