

For Research Use Only

TAB1 Monoclonal antibody, PBS Only (Detector)

Catalog Number: 67020-2-PBS



Basic Information

Catalog Number:

67020-2-PBS

Source:

Mouse

Isotype:

IgG1

Immunogen Catalog Number:

AG6590

GenBank Accession Number:

BC050554

GeneID (NCBI):

10454

UNIPROT ID:

Q15750

Full Name:

mitogen-activated protein kinase
kinase kinase 7 interacting protein 1

Calculated MW:

55 kDa

Purification Method:

Protein G purification

CloneNo.:

2G8B2

Applications

Tested Applications:

Cytometric bead array, Indirect ELISA

Species Specificity:

human

Background Information

Storage

Storage:

Store at -80°C.

The product is shipped with ice packs. Upon receipt, store it immediately at -80°C

Storage Buffer:

PBS only, pH7.3

For technical support and original validation data for this product please contact:

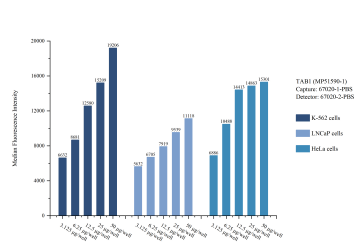
T: 4006900926

E: Proteintech-CN@ptglab.com

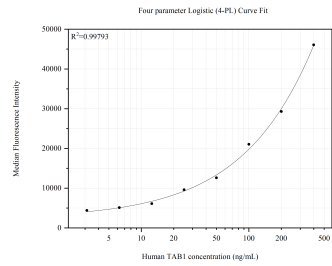
W: ptgcn.com

This product is exclusively available under Proteintech Group brand and is not available to purchase from any other manufacturer.

Selected Validation Data



Cytometric bead array sample test of MP51590-1, TAB1 Monoclonal Matched Antibody Pair, PBS Only. Capture antibody: 67020-1-PBS. Detection antibody: 67020-2-PBS.



Cytometric bead array standard curve of MP51590-1, TAB1 Monoclonal Matched Antibody Pair, PBS Only. Capture antibody: 67020-1-PBS. Detection antibody: 67020-2-PBS. Standard: Ag6590. Range: 3.125-400 ng/mL.