

For Research Use Only

# TAB1 Monoclonal antibody

Catalog Number: 67020-1-Ig **2 Publications**



## Basic Information

|                                     |   |  |
|-------------------------------------|---|--|
| Catalog Number:<br>67020-1-Ig       | GenBank Accession Number:<br>BC050554   | Purification Method:<br>Protein A purification                                       |
| Concentration:<br>1000 ug/ml        | GeneID (NCBI):<br>10454   | CloneNo.:<br>1E10D12   |
| Source:<br>Mouse                    | UNIPROT ID:<br>Q15750   | Recommended Dilutions:<br>WB 1:5000-1:10000<br>IHC 1:200-1:800<br>IF/ICC 1:200-1:800 |
| Isotype:<br>IgG1                    | Full Name:<br>mitogen-activated protein kinase<br>kinase kinase 7 interacting protein 1 |  |
| Immunogen Catalog Number:<br>AG6590 | Calculated MW:<br>55 kDa  |  |
|                                     | Observed MW:<br>55 kDa  |  |

## Applications

|  |   |
|--|---|
| Tested Applications:<br>WB, IHC, IF/ICC, ELISA   | Positive Controls:  |
| Cited Applications:<br>WB, IP  | WB : HEK-293 cells, HeLa cells, HSC-T6 cells, K-562 cells, MCF-7 cells, NIH/3T3 cells |
| Species Specificity:<br>human, mouse, rat  | IHC : human lung cancer tissue,   |
| Cited Species:<br>human  | IF/ICC : A431 cells,  |
| <b>Note-IHC: suggested antigen retrieval with TE buffer pH 9.0; (*) Alternatively, antigen retrieval may be performed with citrate buffer pH 6.0</b> |   |

## Background Information

### Notable Publications

| Author               | Pubmed ID | Journal   | Application |
|----------------------|-----------|-----------|-------------|
| Geeske M van Woerden | 35730652  | Hum Mutat | WB          |
| Cong Liu             | 38459169  | Leukemia  | WB,IP       |

## Storage

**Storage:**  
Store at -20°C. Stable for one year after shipment.  
**Storage Buffer:**  
PBS with 0.02% sodium azide and 50% glycerol, pH7.3  
Aliquoting is unnecessary for -20°C storage

For technical support and original validation data for this product please contact:

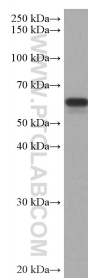
T: 4006900926

E: [Proteintech-CN@ptglab.com](mailto:Proteintech-CN@ptglab.com)

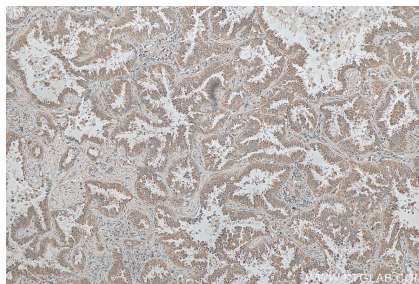
W: [ptgcn.com](http://ptgcn.com)

**This product is exclusively available under Proteintech Group brand and is not available to purchase from any other manufacturer.**

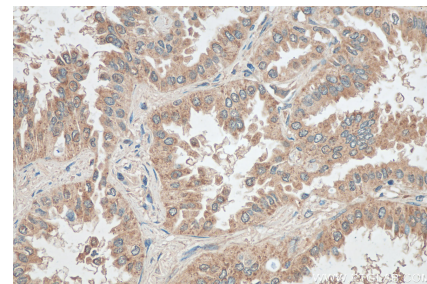
## Selected Validation Data



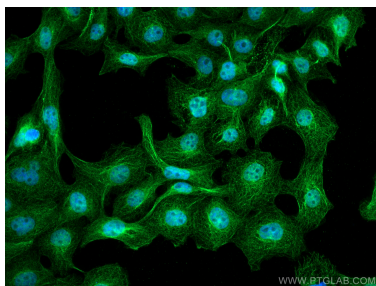
HEK-293 cells were subjected to SDS PAGE followed by western blot with 67020-1-Ig (TAB1 antibody) at dilution of 1:10000 incubated at room temperature for 1.5 hours.



Immunohistochemical analysis of paraffin-embedded human lung cancer tissue slide using 67020-1-Ig (TAB1 antibody) at dilution of 1:400 (under 10x lens). Heat mediated antigen retrieval with Tris-EDTA buffer (pH 9.0).



Immunohistochemical analysis of paraffin-embedded human lung cancer tissue slide using 67020-1-Ig (TAB1 antibody) at dilution of 1:400 (under 40x lens). Heat mediated antigen retrieval with Tris-EDTA buffer (pH 9.0).



Immunofluorescent analysis of (4% PFA) fixed A431 cells using TAB1 antibody (67020-1-Ig, Clone: 1E10D12 ) at dilution of 1:400 and CoraLite®488-Conjugated AffiniPure Goat Anti-Mouse IgG(H+L).