

For Research Use Only

# MAP2 Monoclonal antibody, PBS Only

Catalog Number: 67015-1-PBS



## Basic Information

|                           |                                  |                        |
|---------------------------|----------------------------------|------------------------|
| Catalog Number:           | GenBank Accession Number:        | Purification Method:   |
| 67015-1-PBS               | BC038857                         | Protein A purification |
| Concentration:            | GeneID (NCBI):                   | CloneNo.:              |
| 1mg/ml                    | 4133                             | 1C3E6                  |
| Source:                   | UNIPROT ID:                      |                        |
| Mouse                     | P11137                           |                        |
| Isotype:                  | Full Name:                       |                        |
| IgG2b                     | microtubule-associated protein 2 |                        |
| Immunogen Catalog Number: | Calculated MW:                   |                        |
| AG11349                   | 200 kDa                          |                        |

## Applications

**Tested Applications:**  
IHC, IF-P, IF-Fro, FC (Intra), Indirect ELISA

**Species Specificity:**  
human, mouse, rat

## Background Information

MAP2 (microtubule-associated protein 2) is a cytoskeleton protein abundant in brain and has important role in neuronal morphogenesis. Multiple high molecular weight (MW) and low molecular weight (MW) MAP2 isoforms are expressed within axons, dendrites, and cell bodies. The expression of MAP2 is regulated in both a tissue- and developmentally specific manner. MAP2 antibodies have been widely used to mark the neuron or dendrite formation.

## Storage

**Storage:**  
Store at -80°C.  
**The product is shipped with ice packs. Upon receipt, store it immediately at -80°C**

**Storage Buffer:**  
PBS only, pH7.3

For technical support and original validation data for this product please contact:

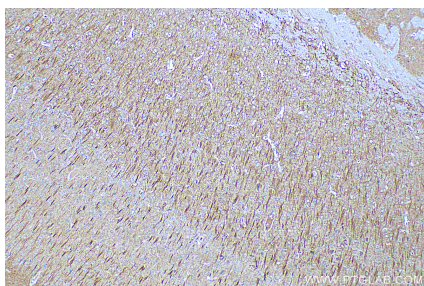
T: 4006900926

E: [Proteintech-CN@ptglab.com](mailto:Proteintech-CN@ptglab.com)

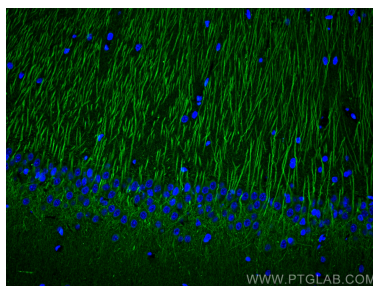
W: [ptgcn.com](http://ptgcn.com)

**This product is exclusively available under Proteintech Group brand and is not available to purchase from any other manufacturer.**

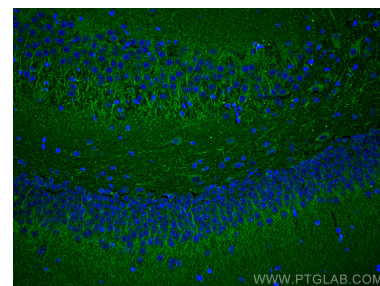
## Selected Validation Data



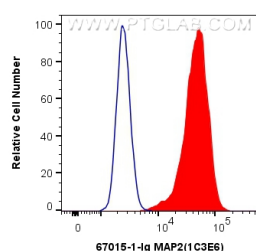
Immunohistochemical analysis of paraffin-embedded mouse brain tissue slide using 67015-1-Ig (MAP2 antibody) at dilution of 1:2000 (under 10x lens). Heat mediated antigen retrieval with Tris-EDTA buffer (pH 9.0). This data was developed using the same antibody clone with 67015-1-PBS in a different storage buffer formulation.



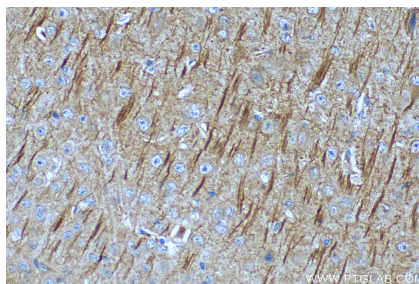
Immunofluorescent analysis of (4% PFA) fixed rat brain tissue using MAP2 antibody (67015-1-Ig, Clone: 1C3E6) at dilution of 1:400 and CoraLite®488-Conjugated AffiniPure Goat Anti-Mouse IgG(H+L). This data was developed using the same antibody clone with 67015-1-PBS in a different storage buffer formulation.



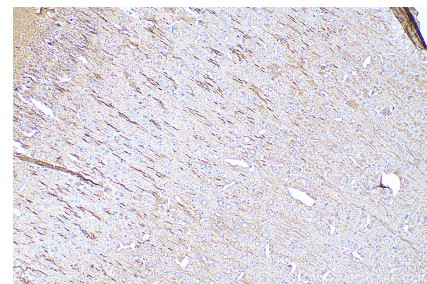
Immunofluorescent analysis of (4% PFA) fixed mouse brain tissue using MAP2 antibody (67015-1-Ig, Clone: 1C3E6) at dilution of 1:400 and CoraLite®488-Conjugated AffiniPure Goat Anti-Mouse IgG(H+L). This data was developed using the same antibody clone with 67015-1-PBS in a different storage buffer formulation.



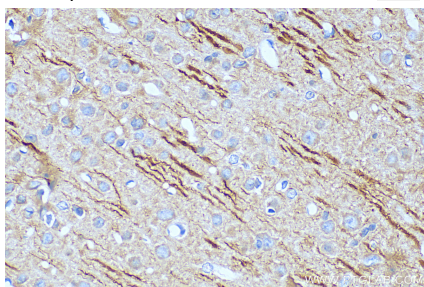
1X10<sup>6</sup> Neuro-2a cells were intracellularly stained with 0.4 ug Anti-Human MAP2 (67015-1-Ig, Clone:1C3E6) and CoraLite®488-Conjugated AffiniPure Goat Anti-Mouse IgG(H+L) at dilution 1:1000 (red), or 0.4 ug Mouse IgG2b Isotype Control (MPC-11) (65128-1-Ig, Clone: MPC-11) (blue). Cells were fixed with 4% PFA and permeabilized with Flow Cytometry Perm Buffer (PF00011-C). This data was developed using the same antibody clone with 67015-1-PBS in a



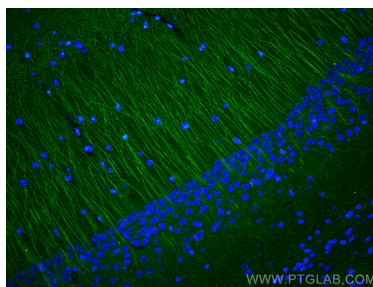
Immunohistochemical analysis of paraffin-embedded mouse brain tissue slide using 67015-1-Ig (MAP2 antibody) at dilution of 1:2000 (under 40x lens). Heat mediated antigen retrieval with Tris-EDTA buffer (pH 9.0). This data was developed using the same antibody clone with 67015-1-PBS in a different storage buffer formulation.



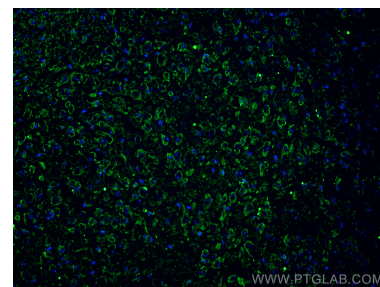
Immunohistochemical analysis of paraffin-embedded rat brain tissue slide using 67015-1-Ig (MAP2 antibody) at dilution of 1:2000 (under 10x lens). Heat mediated antigen retrieval with Tris-EDTA buffer (pH 9.0). This data was developed using the same antibody clone with 67015-1-PBS in a different storage buffer formulation.



Immunohistochemical analysis of paraffin-embedded rat brain tissue slide using 67015-1-Ig (MAP2 antibody) at dilution of 1:2000 (under 40x lens). Heat mediated antigen retrieval with Tris-EDTA buffer (pH 9.0). This data was developed using the same antibody clone with 67015-1-PBS in a different storage buffer formulation.



Immunofluorescent analysis of (4% PFA) fixed mouse brain tissue using MAP2 antibody (67015-1-Ig, Clone: 1C3E6) at dilution of 1:400 and CoraLite®488-Conjugated AffiniPure Goat Anti-Mouse IgG(H+L). This data was developed using the same antibody clone with 67015-1-PBS in a different storage buffer formulation.



Immunofluorescent analysis of (4% PFA) fixed frozen OCT-embedded mouse brain tissue using MAP2 antibody (67015-1-Ig, Clone: 1C3E6) at dilution of 1:800 and CoraLite®488-Conjugated AffiniPure Goat Anti-Mouse IgG(H+L) (SA00013-1). This data was developed using the same antibody clone with 67015-1-PBS in a different storage buffer formulation.