

For Research Use Only

PTPRO Monoclonal antibody

Catalog Number: 67000-1-Ig **3 Publications**



Basic Information

Catalog Number: 67000-1-Ig	GenBank Accession Number: BC035960	Purification Method: Protein A purification
Size: 2004 μ g/ml	GeneID (NCBI): 5800	CloneNo.: 2F2B4
Source: Mouse	UNIPROT ID: Q16827	Recommended Dilutions: WB 1:500-1:2000 IHC 1:1000-1:4000 IF-P 1:400-1:1600
Isotype: IgG2b	Full Name: protein tyrosine phosphatase, receptor type, O	
Immunogen Catalog Number: AG8284	Calculated MW: 138 kDa	
	Observed MW: 160 kDa, 180-220 kDa	

Applications

Tested Applications: WB, IHC, IF-P, ELISA	Positive Controls:
Cited Applications: WB, IF	WB : pig kidney tissue,
Species Specificity: Human, Pig	IHC : human kidney tissue,
Cited Species: human, mouse	IF-P : human kidney tissue,

Note-IHC: suggested antigen retrieval with TE buffer pH 9.0; (*) Alternatively, antigen retrieval may be performed with citrate buffer pH 6.0

Background Information

PTPRO(receptor-type tyrosine-protein phosphatase O) is also named as GLEPP1, PTPU2 and belongs to the protein-tyrosine phosphatase family. The protein is a receptor-like membrane protein tyrosine phosphatase expressed at the apical membrane of the podocyte foot processes in the kidney(PMID:21722858). The 1,159-amino acid predicted mature protein contains a large extracellular domain, a single transmembrane domain, and a single intracellular PTPase domain. Defects in PTPRO are the cause of nephrotic syndrome type 6 (NPHS6). In reducing conditions, PTPRO can form a smear from 180 to 220 kDa; In non-reducing conditions, a band appears around 350 kDa, which likely represents the dimeric form of full-length PTPRO (PMID: 19573017).

Notable Publications

Author	Pubmed ID	Journal	Application
Shushan Yan	31827380	Mediators Inflamm	WB
Jia-Qi Ma	39635132	iScience	IF
Shichuan Tan	39276174	Cell Mol Life Sci	WB

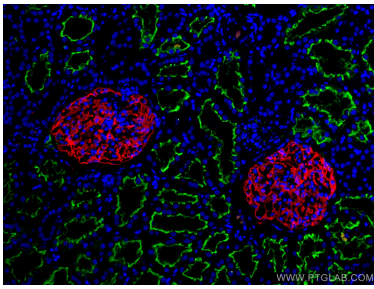
Storage

Storage:
Store at -20°C.
Storage Buffer:
PBS with 0.02% sodium azide and 50% glycerol pH 7.3.
Aliquoting is unnecessary for -20°C storage

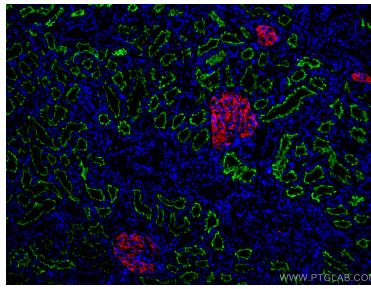
For technical support and original validation data for this product please contact:
T: 4006900926 E: Proteintech-CN@ptglab.com W: ptgcn.com

This product is exclusively available under Proteintech Group brand and is not available to purchase from any other manufacturer.

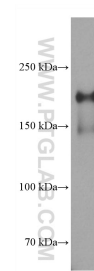
Selected Validation Data



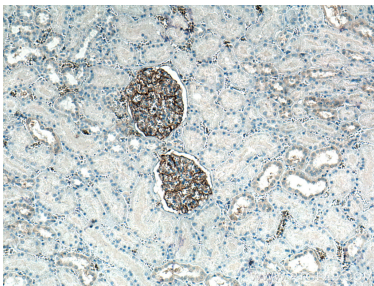
Immunofluorescent analysis of (4% PFA) fixed human kidney tissue using PTPRO antibody (67000-1-Ig, Clone: 2F2B4) at dilution of 1:800 and CoraLite®594-Conjugated Goat Anti-Mouse IgG(H+L), ACE2 antibody (21115-1-AP, green).



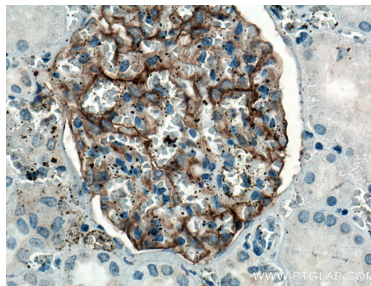
Immunofluorescent analysis of (4% PFA) fixed human kidney tissue using PTPRO antibody (67000-1-Ig, Clone: 2F2B4) at dilution of 1:800 and CoraLite®594-Conjugated Goat Anti-Mouse IgG(H+L), ACE2 antibody (21115-1-AP, green).



pig kidney tissue were subjected to SDS PAGE followed by western blot with 67000-1-Ig (PTPRO antibody) at dilution of 1:2000 incubated at room temperature for 1.5 hours.



Immunohistochemical analysis of paraffin-embedded human kidney tissue slide using 67000-1-Ig (PTPRO antibody) at dilution of 1:3000 (under 10x lens. Heat mediated antigen retrieval with Tris-EDTA buffer (pH 9.0).



Immunohistochemical analysis of paraffin-embedded human kidney tissue slide using 67000-1-Ig (PTPRO antibody) at dilution of 1:3000 (under 40x lens. Heat mediated antigen retrieval with Tris-EDTA buffer (pH 9.0).