

For Research Use Only

CEP63 Monoclonal antibody

Catalog Number: 66996-1-Ig **1 Publications**



Basic Information

Catalog Number: 66996-1-Ig	GenBank Accession Number: BC014050	Purification Method: Protein G purification
Concentration: 1000 ug/ml	GeneID (NCBI): 80254	CloneNo.: 2G12B2
Source: Mouse	UNIPROT ID: Q96MT8	Recommended Dilutions: WB: 1:1000-1:6000 IF/ICC: 1:1000-1:4000
Isotype: IgG1	Full Name: centrosomal protein 63kDa	
Immunogen Catalog Number: AG9227	Calculated MW: 703 aa, 81 kDa	
	Observed MW: 85 kDa	

Applications

Tested Applications: WB, IF/ICC, ELISA	Positive Controls:
Cited Applications: IF	WB : HeLa cells, MCF-7 cells, T-47D cells, PC-3 cells, HepG2 cells, HSC-T6 cells
Species Specificity: human, mouse, rat	IF/ICC : hTERT-RPE1 cells,
Cited Species: mouse	

Background Information

CEP63 is required for normal spindle assembly. It maintains centrosome numbers through centrosomal recruitment of CEP152. CEP63 recruits CDK1 to centrosomes. It plays a role in DNA damage response.

Notable Publications

Author	Pubmed ID	Journal	Application
Lin Yin	39359098	Neural Regen Res	IF

Storage

Storage:
Store at -20°C. Stable for one year after shipment.
Storage Buffer:
PBS with 0.02% sodium azide and 50% glycerol, pH7.3
Aliquoting is unnecessary for -20°C storage

For technical support and original validation data for this product please contact:

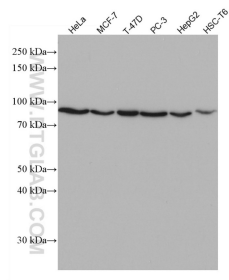
T: 4006900926

E: Proteintech-CN@ptglab.com

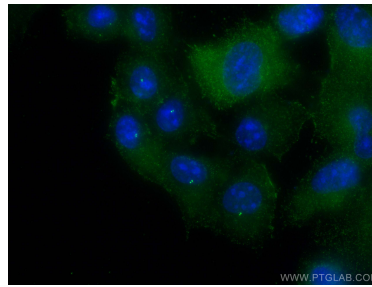
W: ptgcn.com

This product is exclusively available under Proteintech Group brand and is not available to purchase from any other manufacturer.

Selected Validation Data



Various lysates were subjected to SDS PAGE followed by western blot with 66996-1-Ig (CEP63 antibody) at dilution of 1:3000 incubated at room temperature for 1.5 hours.



Immunofluorescent analysis of (-20°C Methanol) fixed hTERT-RPE1 cells using CEP63 antibody (66996-1-Ig, Clone: 2G12B2) at dilution of 1:2000 and CoraLite®488-Conjugated AffiniPure Goat Anti-Mouse IgG(H+L).