

# CTBP1 Monoclonal antibody

Catalog Number: 66995-1-Ig

## Basic Information

<b>Catalog Number:</b> 66995-1-Ig	<b>GenBank Accession Number:</b> BC011655	<b>Purification Method:</b> Protein A purification
<b>Size:</b> 2300 µg/ml	<b>GeneID (NCBI):</b> 1487	<b>CloneNo.:</b> 1C4B2
<b>Source:</b> Mouse	<b>UNIPROT ID:</b> Q13363	<b>Recommended Dilutions:</b> WB 1:5000-1:50000 IHC 1:1000-1:4000 IF/ICC 1:2000-1:8000
<b>Isotype:</b> IgG1	<b>Full Name:</b> C-terminal binding protein 1	
<b>Immunogen Catalog Number:</b> AG28567	<b>Calculated MW:</b> 48 kDa <b>Observed MW:</b> 45-48 kDa	

## Applications

<b>Tested Applications:</b> WB, IHC, IF/ICC, FC (Intra), ELISA	<b>Positive Controls:</b>
<b>Species Specificity:</b> human, mouse, rat	<b>WB :</b> MCF-7 cells, HEK-293 cells, A549 cells, HL-60 cells, HSC-T6 cells, HeLa cells, NCCIT cells, LNCaP cells, Jurkat cells, 4T1 cells, RAW 264.7 cells, NIH/3T3 cells
<b>Note-IHC: suggested antigen retrieval with TE buffer pH 9.0; (*) Alternatively, antigen retrieval may be performed with citrate buffer pH 6.0</b>	<b>IHC :</b> human breast cancer tissue, human prostate cancer tissue
	<b>IF/ICC :</b> HepG2 cells,

## Background Information

CTBP1, also named as C-terminal-binding protein 1, is a 440 amino acid protein, which belongs to the D-isomer specific 2-hydroxyacid dehydrogenase family. CTBP1 is a cellular phosphoprotein that associates with various proteins and functions as a corepressor of transcription. CTBP1 and the related protein CTBP2 are characterized as C-terminal binding protein of adenovirus E1A, and they preferentially associate with the E1A via a 5-amino acid motif, PLDLS, to repress E1A induced oncogenesis and cellular transformation. CTBP1 is expressed from embryo to adult, but CTBP2 is mainly expressed during embryogenesis.

## Storage

**Storage:**  
Store at -20°C. Stable for one year after shipment.  
**Storage Buffer:**  
PBS with 0.02% sodium azide and 50% glycerol pH 7.3.  
**Aliquoting is unnecessary for -20°C storage**

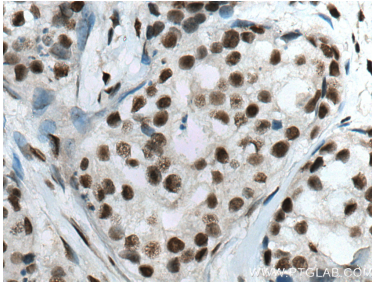
For technical support and original validation data for this product please contact:

T: 4006900926

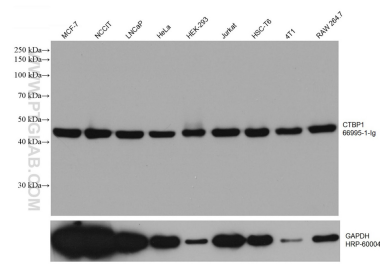
E: [Proteintech-CN@ptglab.com](mailto:Proteintech-CN@ptglab.com)W: [ptgcn.com](http://ptgcn.com)

This product is exclusively available under Proteintech Group brand and is not available to purchase from any other manufacturer.

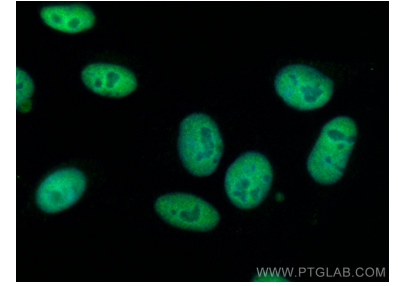
## Selected Validation Data



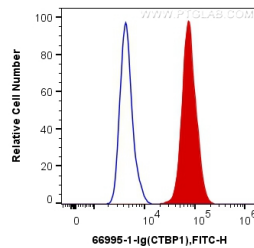
Immunohistochemical analysis of paraffin-embedded human breast cancer tissue slide using 66995-1-Ig (CTBP1 antibody) at dilution of 1:2000 (under 40x lens). Heat mediated antigen retrieval with Tris-EDTA buffer (pH 9.0).



Various lysates were subjected to SDS PAGE followed by western blot with 66995-1-Ig (CTBP1 antibody) at dilution of 1:20000 incubated at room temperature for 1.5 hours. The membrane was stripped and reblotted with HRP-conjugated GAPDH Monoclonal antibody (HRP-60004) as loading control.



Immunofluorescent analysis of (4% PFA) fixed HepG2 cells using CTBP1 antibody (66995-1-Ig, Clone: 1C4B2) at dilution of 1:4000 and CoraLite®488-Conjugated AffiniPure Goat Anti-Mouse IgG(H+L).



$1 \times 10^6$  HepG2 cells were intracellularly stained with 0.2 ug Anti-Human CTBP1 (66995-1-Ig, Clone: 1C4B2) and CoraLite®488-Conjugated AffiniPure Goat Anti-Mouse IgG(H+L) at dilution 1:1000 (red), or 0.2 ug Mouse IgG1 Isotype Control (66360-1-Ig, Clone: T1F8D3F10) (blue). Cells were fixed and permeabilized with Transcription Factor Staining Buffer Kit (PF00011).