

For Research Use Only

# LHPP Monoclonal antibody, PBS Only

Catalog Number: 66988-1-PBS



## Basic Information

Catalog Number:

66988-1-PBS

Size:

1mg/ml

Source:

Mouse

Isotype:

IgG1

Immunogen Catalog Number:

AG8375

GenBank Accession Number:

BC007324

GeneID (NCBI):

64077

UNIPROT ID:

Q9H008

Full Name:

phospholysine phosphohistidine  
inorganic pyrophosphate phosphatase

Calculated MW:

23 kDa, 29 kDa

Observed MW:

23-30 kDa

Purification Method:

Protein G purification

CloneNo.:

2A2A4

## Applications

Tested Applications:

WB, IF, Indirect ELISA

Species Specificity:

Mouse, Rat, Pig, human

## Background Information

### Storage

Storage:

Store at -80°C.

The product is shipped with ice packs. Upon receipt, store it immediately at -80°C

Storage Buffer:

PBS Only

For technical support and original validation data for this product please contact:

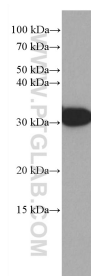
T: 4006900926

E: [Proteintech-CN@ptglab.com](mailto:Proteintech-CN@ptglab.com)

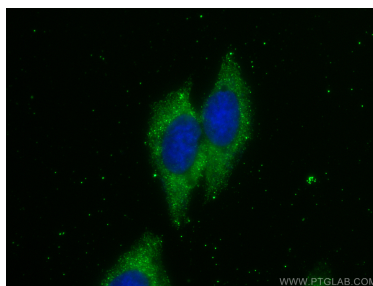
W: [ptgcn.com](http://ptgcn.com)

This product is exclusively available under Proteintech Group brand and is not available to purchase from any other manufacturer.

## Selected Validation Data



rat liver tissue were subjected to SDS PAGE followed by western blot with 66988-1-Ig (LHPP antibody) at dilution of 1:3000 incubated at room temperature for 1.5 hours. This data was developed using the same antibody clone with 66988-1-PBS in a different storage buffer formulation.



Immunofluorescent analysis of (-20°C Methanol) fixed HepG2 cells using LHPP antibody (66988-1-Ig, Clone: 2A2A4 ) at dilution of 1:800 and CoraLite®488-Conjugated AffiniPure Goat Anti-Mouse IgG(H+L). This data was developed using the same antibody clone with 66988-1-PBS in a different storage buffer formulation.