

For Research Use Only

FBL Monoclonal antibody, PBS Only

Catalog Number: 66985-1-PBS



Basic Information

Catalog Number: 66985-1-PBS	GenBank Accession Number: BC019260	Purification Method: Protein G purification
Size: 1mg/ml	GeneID (NCBI): 2091	CloneNo.: 3A9E8
Source: Mouse	UNIPROT ID: P22087	
Isotype: IgG1	Full Name: fibrillarin	
Immunogen Catalog Number: AG8841	Calculated MW: 321 aa, 34 kDa	
	Observed MW: 34 kDa	

Applications

Tested Applications:
WB, IHC, IF/ICC, FC (Intra), IP, ELISA

Species Specificity:
human, mouse, rat

Background Information

Fibrillarin (Fbl) is an essential nucleolar protein that plays an essential role in ribosome biogenesis and more particularly in the methylation of ribosomal RNAs and rDNA histones. FBL is highly expressed in various cancers and correlates with poor survival outcomes in cancer patients, such as hepatocellular carcinoma (PMID: 33376525). Knockdown of FBL sensitizes tumor cells and xenografts to DNA crosslinking agents, and leads to homologous recombination-mediated DNA repair defects (PMID: 37489617).

Storage

Storage:
Store at -80°C.

The product is shipped with ice packs. Upon receipt, store it immediately at -80°C

Storage Buffer:
PBS Only

For technical support and original validation data for this product please contact:

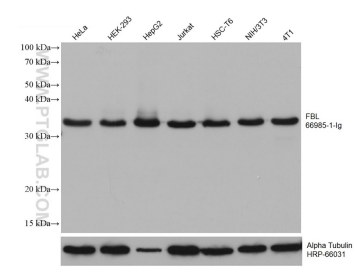
T: 4006900926

E: Proteintech-CN@ptglab.com

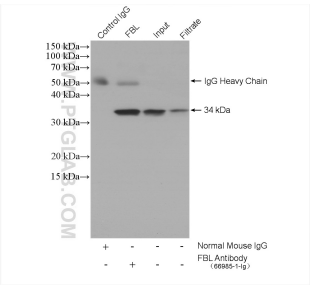
W: ptgcn.com

This product is exclusively available under Proteintech Group brand and is not available to purchase from any other manufacturer.

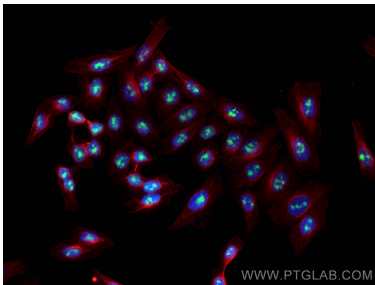
Selected Validation Data



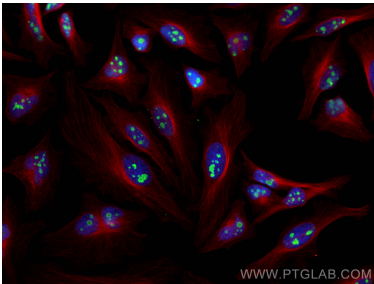
Various lysates were subjected to SDS PAGE followed by western blot with 66985-1-Ig (FBL antibody) at dilution of 1:10000 incubated at room temperature for 1.5 hours. The membrane was stripped and reblotted with HRP-conjugated Alpha Tubulin Monoclonal antibody (HRP-66031) as loading control. This data was developed using the same antibody clone with 66985-1-PBS in a different storage buffer formulation.



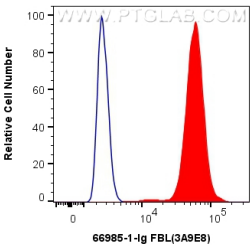
IP result of anti-FBL (IP:66985-1-Ig, 5ug; Detection:66985-1-Ig 1:1000) with HeLa cells lysate 1600 ug. This data was developed using the same antibody clone with 66985-1-PBS in a different storage buffer formulation.



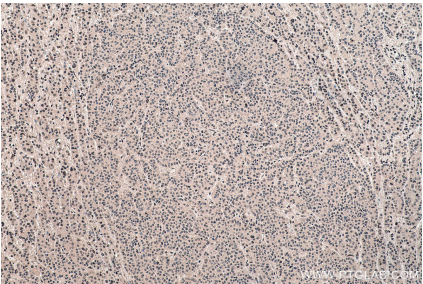
Immunofluorescent analysis of (4% PFA) fixed HepG2 cells using FBL antibody (66985-1-Ig, Clone: 3A9E8) at dilution of 1:400 and CoraLite®488-Conjugated AffiniPure Goat Anti-Mouse IgG(H+L), Alpha Tubulin antibody (11224-1-AP, red). This data was developed using the same antibody clone with 66985-1-PBS in a different storage buffer formulation.



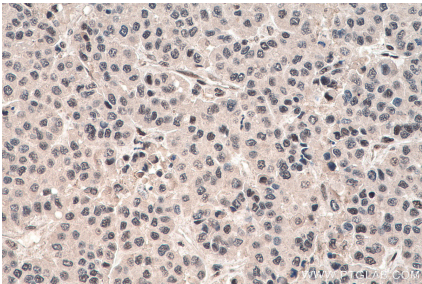
Immunofluorescent analysis of (4% PFA) fixed HeLa cells using FBL antibody (66985-1-Ig, Clone: 3A9E8) at dilution of 1:400 and CoraLite®488-Conjugated AffiniPure Goat Anti-Mouse IgG(H+L), Alpha Tubulin antibody (11224-1-AP, red). This data was developed using the same antibody clone with 66985-1-PBS in a different storage buffer formulation.



1X10⁶ HepG2 cells were intracellularly stained with 0.4 ug Anti-Human FBL (66985-1-Ig, Clone:3A9E8) and CoraLite®488-Conjugated AffiniPure Goat Anti-Mouse IgG(H+L) at dilution 1:1000 (red), or 0.4 ug Mouse IgG1 Isotype Control (MOPC-21) (65124-1-Ig, Clone: MOPC-21) (blue). Cells were fixed and permeabilized with Transcription Factor Staining Buffer Kit (PF00011). This data was developed using the same antibody clone with 66985-1-PBS in a



Immunohistochemical analysis of paraffin-embedded human liver cancer tissue slide using 66985-1-Ig (FBL antibody) at dilution of 1:2000 (under 10x lens). Heat mediated antigen retrieval with Tris-EDTA buffer (pH 9.0). This data was developed using the same antibody clone with 66985-1-PBS in a different storage buffer formulation.



Immunohistochemical analysis of paraffin-embedded human liver cancer tissue slide using 66985-1-Ig (FBL antibody) at dilution of 1:2000 (under 40x lens). Heat mediated antigen retrieval with Tris-EDTA buffer (pH 9.0). This data was developed using the same antibody clone with 66985-1-PBS in a different storage buffer formulation.