

For Research Use Only

FTCD Monoclonal antibody

Catalog Number: 66979-1-Ig

Featured Product

1 Publications



Basic Information

Catalog Number:

66979-1-Ig

Size:

2000 µg/ml

Source:

Mouse

Isotype:

IgG2b

Immunogen Catalog Number:

AG17429

GenBank Accession Number:

BC136395

GeneID (NCBI):

10841

UNIPROT ID:

O95954

Full Name:

formiminotransferase

cyclodeaminase

Calculated MW:

541 aa, 59 kDa

Observed MW:

53-62 kDa

Purification Method:

Protein A purification

CloneNo.:

1H8A1

Recommended Dilutions:

WB 1:3000-1:10000

IHC 1:150-1:600

IF-P 1:200-1:800

Applications

Tested Applications:

WB, IHC, IF-P, ELISA

Cited Applications:

WB

Species Specificity:

human, mouse, rat, pig

Cited Species:

mouse

Note-IHC: suggested antigen retrieval with TE buffer pH 9.0; (*) Alternatively, antigen retrieval may be performed with citrate buffer pH 6.0

Positive Controls:

WB : mouse liver tissue, pig kidney tissue, pig liver tissue, rat liver tissue

IHC : human kidney tissue, human liver cancer tissue

IF-P : human liver cancer tissue,

Background Information

FTCD (formimidoyltransferase cyclodeaminase) is critical for the catabolism of histidine, a . This process is one-carbon units that can enter the one-carbon/folate cycle, which provides methyl groups for arsenic metabolism (PMID: 30893314). In addition, FTCD could serve as a predictive and prognostic marker for patients with HCC (PMID: 37675273).

Notable Publications

Author	Pubmed ID	Journal	Application
Youyi Liu	38254641	Biomolecules	WB

Storage

Storage:

Store at -20°C. Stable for one year after shipment.

Storage Buffer:

PBS with 0.02% sodium azide and 50% glycerol pH 7.3.

Aliquoting is unnecessary for -20°C storage

For technical support and original validation data for this product please contact:

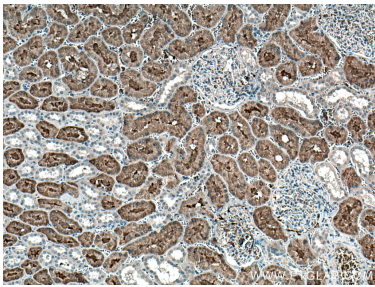
T: 4006900926

E: Proteintech-CN@ptglab.com

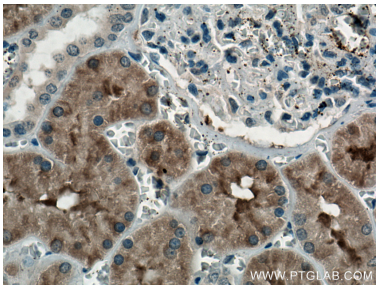
W: ptgcn.com

This product is exclusively available under Proteintech Group brand and is not available to purchase from any other manufacturer.

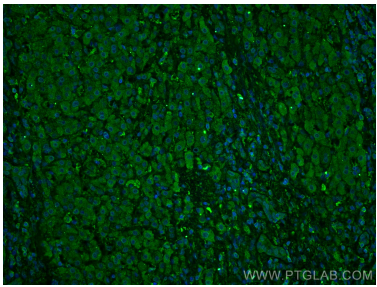
Selected Validation Data



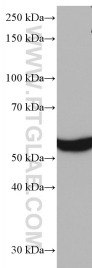
Immunohistochemical analysis of paraffin-embedded human kidney tissue slide using 66979-1-Ig (FTCD antibody) at dilution of 1:300 (under 10x lens). Heat mediated antigen retrieval with Tris-EDTA buffer (pH 9.0).



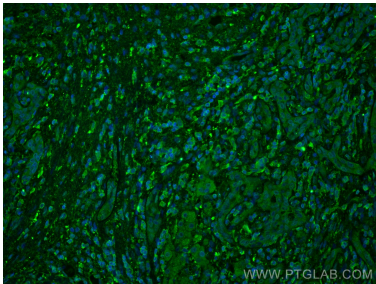
Immunohistochemical analysis of paraffin-embedded human kidney tissue slide using 66979-1-Ig (FTCD antibody) at dilution of 1:300 (under 40x lens). Heat mediated antigen retrieval with Tris-EDTA buffer (pH 9.0).



Immunofluorescent analysis of (4% PFA) fixed human liver cancer tissue using FTCD antibody (66979-1-Ig, Clone: 1H8A1) at dilution of 1:400 and CoraLite®488-Conjugated AffiniPure Goat Anti-Mouse IgG(H+L).



mouse liver tissue were subjected to SDS PAGE followed by western blot with 66979-1-Ig (FTCD antibody) at dilution of 1:30000 incubated at room temperature for 1.5 hours.



Immunofluorescent analysis of (4% PFA) fixed human liver cancer tissue using FTCD antibody (66979-1-Ig, Clone: 1H8A1) at dilution of 1:400 and CoraLite®488-Conjugated AffiniPure Goat Anti-Mouse IgG(H+L).