

For Research Use Only

PAPPA Monoclonal antibody

Catalog Number: 66962-1-Ig

Featured Product

1 Publications



Basic Information

Catalog Number:

66962-1-Ig

Concentration:

1000 ug/ml

Source:

Mouse

Isotype:

IgG1

Immunogen Catalog Number:

AG11863

GenBank Accession Number:

BC078657

GeneID (NCBI):

5069

UNIPROT ID:

Q13219

Full Name:

pregnancy-associated plasma protein A, pappalysin 1

Calculated MW:

1627 aa, 181 kDa

Observed MW:

180-220 kDa

Purification Method:

Protein A purification

CloneNo.:

1G5A7

Recommended Dilutions:

WB 1:4000-1:10000

IHC 1:500-1:1000

Applications

Tested Applications:

WB, IHC, ELISA

Cited Applications:

WB

Species Specificity:

human

Cited Species:

human

Note-IHC: suggested antigen retrieval with TE buffer pH 9.0; (*) Alternatively, antigen retrieval may be performed with citrate buffer pH 6.0

Positive Controls:

WB : human placenta tissue, MCF-7 cells

IHC : human placenta tissue,

Background Information

Pregnancy-associated plasma protein A (PAPPA) is a metalloproteinase secreted by human placenta, and it can interact with IGF-binding proteins (IGFBPs) to regulate the proteolysis and the bioavailability of insulin-like growth factor (IGF). Circulating PAPPA represents a consolidated biomarker in combined first-trimester screening tests, allowing an early prenatal diagnosis of chromosomal abnormalities, preeclampsia, and intrauterine growth restriction risk. PAPPA is highly expressed in placenta and pregnancy serum (PMID: 34974815, 34974815).

Notable Publications

Author	Pubmed ID	Journal	Application
Go Itoh	34379869	Mol Oncol	WB

Storage

Storage:

Store at -20°C. Stable for one year after shipment.

Storage Buffer:

PBS with 0.02% sodium azide and 50% glycerol, pH7.3

Aliquoting is unnecessary for -20°C storage

For technical support and original validation data for this product please contact:

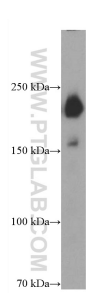
T: 4006900926

E: Proteintech-CN@ptglab.com

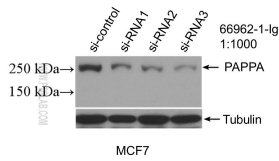
W: ptgcn.com

This product is exclusively available under Proteintech Group brand and is not available to purchase from any other manufacturer.

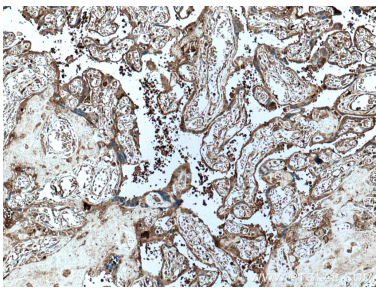
Selected Validation Data



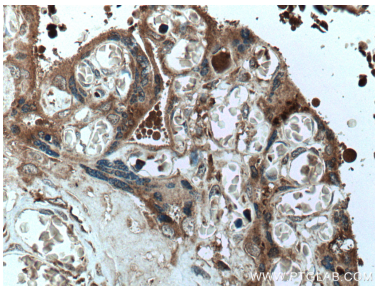
human placenta tissue were subjected to SDS PAGE followed by western blot with 66962-1-Ig (PAPPA antibody) at dilution of 1:4000 incubated at room temperature for 1.5 hours.



WB result of PAPPA antibody (66962-1-Ig; 1:1000; incubated at room temperature for 1.5 hours) with sh-Control and sh-PAPPA transfected MCF-7 cells.



Immunohistochemical analysis of paraffin-embedded human placenta tissue slide using 66962-1-Ig (PAPPA antibody) at dilution of 1:1000 (under 10x lens. Heat mediated antigen retrieval with Tris-EDTA buffer (pH 9.0).



Immunohistochemical analysis of paraffin-embedded human placenta tissue slide using 66962-1-Ig (PAPPA antibody) at dilution of 1:1000 (under 40x lens. Heat mediated antigen retrieval with Tris-EDTA buffer (pH 9.0).