

For Research Use Only

# NDC80 Monoclonal antibody, PBS Only



Catalog Number: 66960-1-PBS

## Basic Information

Catalog Number:

66960-1-PBS

Size:

1 mg/ml

Source:

Mouse

Isotype:

IgG1

Immunogen Catalog Number:

AG8065

GenBank Accession Number:

BC035617

GeneID (NCBI):

10403

UNIPROT ID:

O14777

Full Name:

NDC80 homolog, kinetochore complex component (S. cerevisiae)

Calculated MW:

74 kDa

Observed MW:

71-74 kDa

Purification Method:

Protein A purification

CloneNo.:

2B7A8

## Applications

Tested Applications:

WB, Indirect ELISA

Species Specificity:

Human, rat, mouse

## Background Information

### Storage

Storage:

Store at -80°C.

The product is shipped with ice packs. Upon receipt, store it immediately at -80°C

Storage Buffer:

PBS Only

For technical support and original validation data for this product please contact:

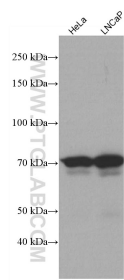
T: 4006900926

E: [Proteintech-CN@ptglab.com](mailto:Proteintech-CN@ptglab.com)

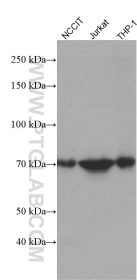
W: [ptgcn.com](http://ptgcn.com)

This product is exclusively available under Proteintech Group brand and is not available to purchase from any other manufacturer.

## Selected Validation Data



Various lysates were subjected to SDS PAGE followed by western blot with 66960-1-Ig (NDC80 antibody) at dilution of 1:5000 incubated at room temperature for 1.5 hours. This data was developed using the same antibody clone with 66960-1-PBS in a different storage buffer formulation.



Various lysates were subjected to SDS PAGE followed by western blot with 66960-1-Ig (NDC80 antibody) at dilution of 1:5000 incubated at room temperature for 1.5 hours. This data was developed using the same antibody clone with 66960-1-PBS in a different storage buffer formulation.