

LXN Monoclonal antibody

Catalog Number: 66957-1-Ig

Basic Information

Catalog Number:

66957-1-Ig

Size:

1800 µg/ml

Source:

Mouse

Isotype:

IgG1

Immunogen Catalog Number:

AG27922

GenBank Accession Number:

BC005346

GeneID (NCBI):

56925

UNIPROT ID:

Q9BS40

Full Name:

latexin

Calculated MW:

222 aa, 26 kDa

Observed MW:

30 kDa

Purification Method:

Protein G purification

CloneNo.:

3E5A5

Recommended Dilutions:

WB 1:2000-1:10000

IHC 1:250-1:1000

IF/ICC 1:400-1:1600

Applications

Tested Applications:

WB, IHC, IF/ICC, FC (Intra), ELISA

Species Specificity:

human, pig, rabbit

Note-IHC: suggested antigen retrieval with TE buffer pH 9.0; (*) Alternatively, antigen retrieval may be performed with citrate buffer pH 6.0

Positive Controls:

WB : pig brain tissue, A549 cells, HEK-293 cells, SH-SY5Y cells, rabbit brain tissue, HeLa cells

IHC : human heart tissue,

IF/ICC : HeLa cells,

Background Information

Latexin, also named as LTXN, LXN, ECI, MUM and TCI, is hardly reversible, non-competitive, and potent inhibitor of CPA1, CPA2 and CPA4. It may function as a neuroprotective mechanism against tau toxicity.

Storage

Storage:

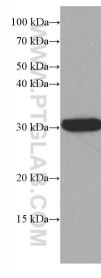
Store at -20°C. Stable for one year after shipment.

Storage Buffer:

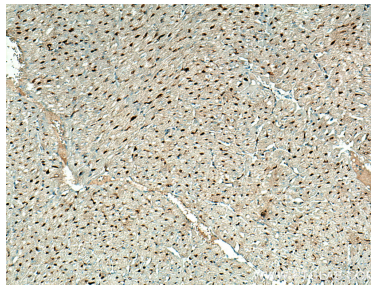
PBS with 0.02% sodium azide and 50% glycerol pH 7.3.

Aliquoting is unnecessary for -20°C storage

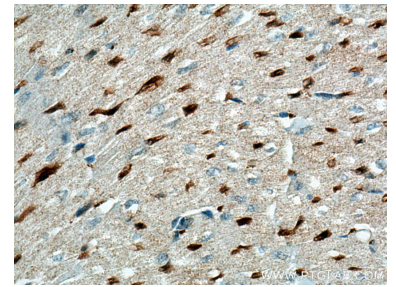
Selected Validation Data



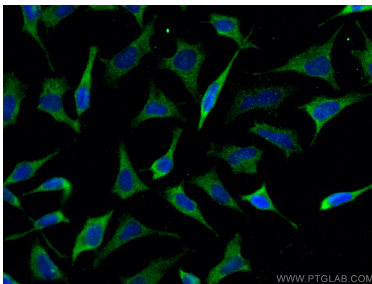
pig brain tissue were subjected to SDS PAGE followed by western blot with 66957-1-Ig (LXN antibody) at dilution of 1:5000 incubated at room temperature for 1.5 hours.



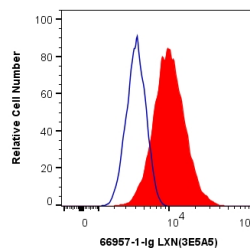
Immunohistochemical analysis of paraffin-embedded human heart tissue slide using 66957-1-Ig (LXN antibody) at dilution of 1:500 (under 10x lens). Heat mediated antigen retrieval with Tris-EDTA buffer (pH 9.0).



Immunohistochemical analysis of paraffin-embedded human heart tissue slide using 66957-1-Ig (LXN antibody) at dilution of 1:500 (under 40x lens). Heat mediated antigen retrieval with Tris-EDTA buffer (pH 9.0).



Immunofluorescent analysis of (-20°C Methanol) fixed HeLa cells using LXN antibody (66957-1-Ig, Clone: 3E5A5) at dilution of 1:800 and CoraLite®488-Conjugated AffiniPure Goat Anti-Mouse IgG(H+L).



1X10⁶ HeLa cells were intracellularly stained with 0.4 ug Anti-Human LXN (66957-1-Ig, Clone:3E5A5) and CoraLite®488-Conjugated AffiniPure Goat Anti-Mouse IgG(H+L) at dilution 1:1000 (red), or 0.4 ug Mouse IgG1 Isotype Control (MOPC-21) (65124-1-Ig, Clone: MOPC-21) (blue). Cells were fixed with 4% PFA and permeabilized with Flow Cytometry Perm Buffer (PF00011-C).