

For Research Use Only

FGFR3 Monoclonal antibody, PBS Only (Capture)

Catalog Number: 66954-1-PBS

Featured Product



Basic Information

Catalog Number:	66954-1-PBS	GenBank Accession Number:	NM_000142	Purification Method:	Protein G purification
Size:	1mg/ml	GeneID (NCBI):	2261	CloneNo.:	1F3G1
Source:	Mouse	Full Name:	fibroblast growth factor receptor 3		
Isotype:	IgG1	Calculated MW:	87 kDa		
Immunogen Catalog Number:	AG26290	Observed MW:	125-135 kDa		

Applications

Tested Applications:
WB, IF/ICC, Cytometric bead array, Indirect ELISA

Species Specificity:
human

Background Information

Fibroblast growth factors (FGFs) are polypeptide growth factors involved in a variety of activities including mitogenesis, angiogenesis, and wound healing (PMID: 1847508). The human FGF receptor family, a subfamily of receptor tyrosine kinases (RTKs), comprises of four family members-FGFR1, FGFR2, FGFR3, and FGFR4 (PMID: 23900974). Each receptor contains an extracellular domain with either two or three immunoglobulin-like domains, a transmembrane domain, and a cytoplasmic tyrosine kinase domain. FGFR3 binds acidic and basic fibroblast GH and plays a role in bone development and maintenance. Mutations in the FGFR3 gene lead to craniosynostosis and multiple types of skeletal dysplasia. Due to frequent mutations in certain cancers, the FGFR3 gene has also been associated with tumor progression.

Storage

Storage:
Store at -80°C.
The product is shipped with ice packs. Upon receipt, store it immediately at -80°C

Storage Buffer:
PBS Only

For technical support and original validation data for this product please contact:

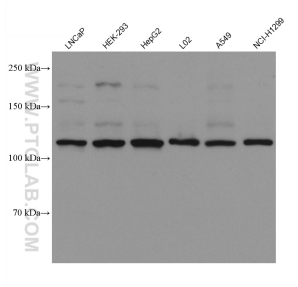
T: 4006900926

E: Proteintech-CN@ptglab.com

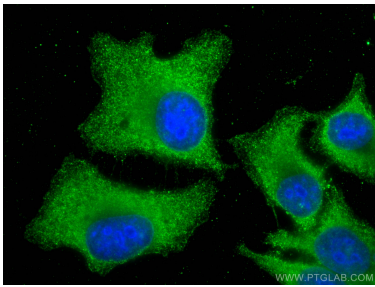
W: ptgcn.com

This product is exclusively available under Proteintech Group brand and is not available to purchase from any other manufacturer.

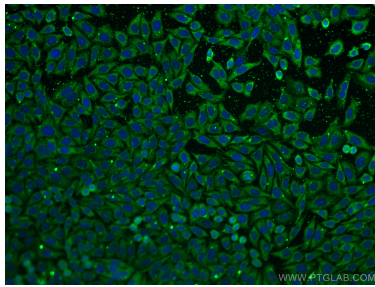
Selected Validation Data



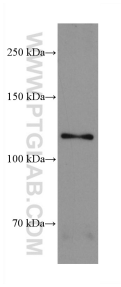
Various lysates were subjected to SDS PAGE followed by western blot with 66954-1-Ig (FGFR3 antibody) at dilution of 1:10000 incubated at room temperature for 1.5 hours. This data was developed using the same antibody clone with 66954-1-PBS in a different storage buffer formulation.



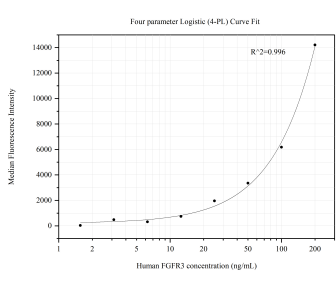
Immunofluorescent analysis of (-20°C Ethanol) fixed HepG2 cells using FGFR3 antibody (66954-1-Ig, Clone: 1F3G1) at dilution of 1:400 and CoraLite®488-Conjugated AffiniPure Goat Anti-Mouse IgG(H+L). This data was developed using the same antibody clone with 66954-1-PBS in a different storage buffer formulation.



Immunofluorescent analysis of (-20°C Ethanol) fixed HepG2 cells using FGFR3 antibody (66954-1-Ig, Clone: 1F3G1) at dilution of 1:400 and CoraLite®488-Conjugated AffiniPure Goat Anti-Mouse IgG(H+L). This data was developed using the same antibody clone with 66954-1-PBS in a different storage buffer formulation.



L-929 cells were subjected to SDS PAGE followed by western blot with 66954-1-Ig (FGFR3 antibody) at dilution of 1:10000 incubated at room temperature for 1.5 hours. This data was developed using the same antibody clone with 66954-1-PBS in a different storage buffer formulation.



Cytometric bead array standard curve of MP50578-1, FGFR3 Monoclonal Matched Antibody Pair, PBS Only. Capture antibody: 66954-1-PBS. Detection antibody: 66954-2-PBS. Standard:Ag26290. Range: 1.563-200 ng/mL.