

RELB Monoclonal antibody

Catalog Number: 66947-1-Ig 1 Publications

Basic Information

Catalog Number:

66947-1-Ig

Size:

1500 µg/ml

Source:

Mouse

Isotype:

IgG1

Immunogen Catalog Number:

AG13824

GenBank Accession Number:

BC028013

GeneID (NCBI):

5971

UNIPROT ID:

Q01201

Full Name:

v-rel reticuloendotheliosis viral
oncogene homolog B

Calculated MW:

62 kDa

Observed MW:

62-65 kDa

Purification Method:

Protein G purification

CloneNo.:

1D7E10

Recommended Dilutions:

WB 1:1000-1:4000

Applications

Tested Applications:

WB, ELISA

Cited Applications:

WB

Species Specificity:

Human

Cited Species:

human

Positive Controls:

WB: Raji cells,

Background Information

RELB, also named as Transcription factor RelB, is a 579 amino acid protein, which contains one RHD domain. RELB localizes in the nucleus and cytoplasm. RELB is a pleiotropic transcription factor which is present in almost all cell types and is involved in many biological processes such as inflammation, immunity, differentiation, cell growth, tumorigenesis and apoptosis.

Notable Publications

Author	Pubmed ID	Journal	Application
Junyang Tan	37277441	Commun Biol	WB

Storage

Storage:

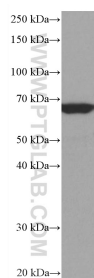
Store at -20°C. Stable for one year after shipment.

Storage Buffer:

PBS with 0.02% sodium azide and 50% glycerol pH 7.3.

Aliquoting is unnecessary for -20°C storage

Selected Validation Data



Raji cells were subjected to SDS PAGE followed by western blot with 66947-1-Ig (RELB antibody) at dilution of 1:2000 incubated at room temperature for 1.5 hours.