

## RDM1 Monoclonal antibody

Catalog Number: 66941-1-Ig

## Basic Information

<b>Catalog Number:</b> 66941-1-Ig	<b>GenBank Accession Number:</b> BC038301	<b>Purification Method:</b> Protein A purification
<b>Size:</b> 1600 µg/ml	<b>GeneID (NCBI):</b> 201299	<b>CloneNo.:</b> 1C10B4
<b>Source:</b> Mouse	<b>UNIPROT ID:</b> Q8NG50	<b>Recommended Dilutions:</b> WB 1:1000-1:6000 IHC 1:150-1:600 IF/ICC 1:200-1:800
<b>Isotype:</b> IgG2a	<b>Full Name:</b> RAD52 motif 1	
<b>Immunogen Catalog Number:</b> AG28686	<b>Calculated MW:</b> 284 aa, 32 kDa <b>Observed MW:</b> 32 kDa	

## Applications

**Tested Applications:**  
IF/ICC, IHC, WB, ELISA

**Species Specificity:**  
Human, Mouse, Rat

**Note-IHC: suggested antigen retrieval with TE buffer pH 9.0; (\*) Alternatively, antigen retrieval may be performed with citrate buffer pH 6.0**

**Positive Controls:**

**WB :** PC-3 cells, HEK-293 cells, HSC-T6 cells, RAW 264.7 cells

**IHC :** human thyroid cancer tissue,

**IF/ICC :** A549 cells,

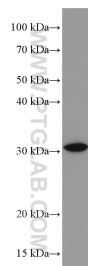
## Background Information

RDM1, also named as RAD52B, encodes a RNA recognition motif (RRM)-containing protein conferred resistance to the antitumor agent cisplatin. The expression of RDM1 is closely related to the cell proliferation and apoptosis of thyroid carcinoma cells and RDM1 may be a potential marker of lung adenocarcinoma. RDM1 has many isoforms (8 kDa, 12-19 kDa and 25-32 kDa) with long or short N-terminus and a great diversity in the exonic composition of C-terminus generated by alternative pre-mRNA splicing and differential usage of two translational start sites. RDM1 protein can be expressed differently in cytoplasm or nuclear/nucleolar in the absence of stress, proteotoxic stress and mild heat shock, suggesting functional differences among the RDM1 proteins. ( PMID: 28939762, 17905820, 28939762, 30069034)

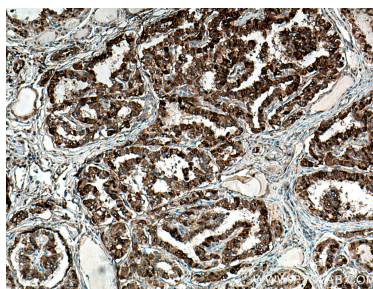
## Storage

**Storage:**  
Store at -20°C. Stable for one year after shipment.  
**Storage Buffer:**  
PBS with 0.02% sodium azide and 50% glycerol pH 7.3.  
Aliquoting is unnecessary for -20°C storage

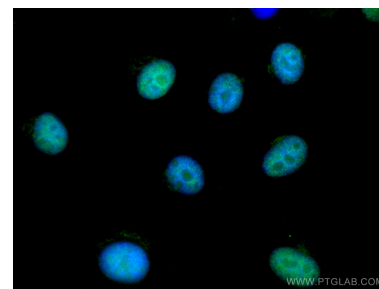
## Selected Validation Data



PC-3 cells were subjected to SDS PAGE followed by western blot with 66941-1-Ig (RDM1 antibody) at dilution of 1:3000 incubated at room temperature for 1.5 hours.



Immunohistochemical analysis of paraffin-embedded human thyroid cancer tissue slide using 66941-1-Ig (RDM1 antibody) at dilution of 1:300 (under 10x lens). Heat mediated antigen retrieval with Tris-EDTA buffer (pH 9.0).



Immunofluorescent analysis of (4% PFA) fixed A549 cells using RDM1 antibody (66941-1-Ig, Clone: 1C10B4 ) at dilution of 1:400 and CoraLite®488-Conjugated AffiniPure Goat Anti-Mouse IgG(H+L).