

For Research Use Only

RACK1; GNB2L1 Monoclonal antibody, PBS Only



Catalog Number: 66940-1-PBS

Basic Information

Catalog Number: 66940-1-PBS	GenBank Accession Number: BC019093	Purification Method: Protein A purification
Size: 1 mg/ml	GeneID (NCBI): 10399	CloneNo.: 1E11A7
Source: Mouse	UNIPROT ID: P63244	
Isotype: IgG2a	Full Name: guanine nucleotide binding protein (G protein), beta polypeptide 2-like 1	
Immunogen Catalog Number: AG26708	Calculated MW: 36 kDa	
	Observed MW: 32 kDa	

Applications

Tested Applications:
WB, Indirect ELISA, IHC, IF

Species Specificity:
Human, Mouse, Rat, Pig

Background Information

Members of the protein kinase C (PKC) family play a key regulatory role in a variety of cellular functions, including cell growth and differentiation, gene expression, hormone secretion and membrane function. RACK1 (receptor for activated protein kinase C 1), encoded by GNB2L1 gene, is a 317 amino acid guanine nucleotide-binding protein subunit beta-2-like 1 protein which is involved in the recruitment, assembly and/or regulation of a variety of signaling molecules, it contains 7 WD-repeats and is implicated in various protein interaction activities. RACK1 is a component of the 40S ribosomal subunit involved in translational repression. Recent finding suggests that RACK1 may be a new promising diagnosis biomarker and therapeutic target for non-small-cell lung cancer (NSCLC).

Storage

Storage:
Store at -80°C.

The product is shipped with ice packs. Upon receipt, store it immediately at -80°C

Storage Buffer:
PBS Only

For technical support and original validation data for this product please contact:

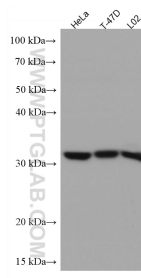
T: 4006900926

E: Proteintech-CN@ptglab.com

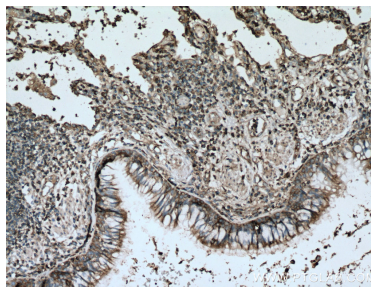
W: ptgcn.com

This product is exclusively available under Proteintech Group brand and is not available to purchase from any other manufacturer.

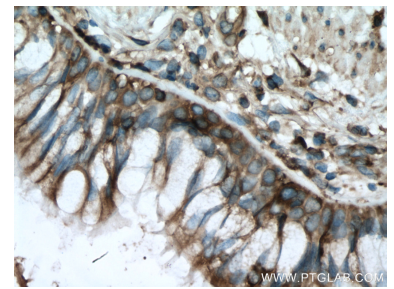
Selected Validation Data



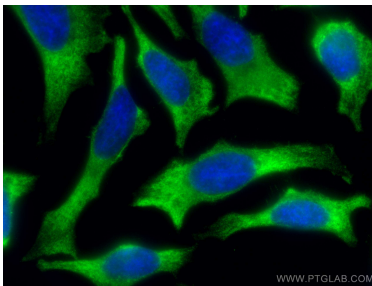
Various lysates were subjected to SDS PAGE followed by western blot with 66940-1-Ig (RACK1; GNB2L1 antibody) at dilution of 1:20000 incubated at room temperature for 1.5 hours. This data was developed using the same antibody clone with 66940-1-PBS in a different storage buffer formulation.



Immunohistochemical analysis of paraffin-embedded human lung cancer tissue slide using 66940-1-Ig (RACK1; GNB2L1 antibody) at dilution of 1:500 (under 10x lens). Heat mediated antigen retrieval with Tris-EDTA buffer (pH 9.0). This data was developed using the same antibody clone with 66940-1-PBS in a different storage buffer formulation.



Immunohistochemical analysis of paraffin-embedded human lung cancer tissue slide using 66940-1-Ig (RACK1; GNB2L1 antibody) at dilution of 1:500 (under 40x lens). Heat mediated antigen retrieval with Tris-EDTA buffer (pH 9.0). This data was developed using the same antibody clone with 66940-1-PBS in a different storage buffer formulation.



Immunofluorescent analysis of (-20°C Methanol) fixed HeLa cells using RACK1; GNB2L1 antibody (66940-1-Ig, Clone: 1E11A7) at dilution of 1:400 and CoraLite®488-Conjugated AffiniPure Goat Anti-Mouse IgG(H+L). This data was developed using the same antibody clone with 66940-1-PBS in a different storage buffer formulation.