

For Research Use Only

# ADH1B Monoclonal antibody, PBS Only



Catalog Number: 66939-1-PBS

Featured Product

## Basic Information

Catalog Number:

66939-1-PBS

Size:

1 mg/ml

Source:

Mouse

Isotype:

IgG2a

Immunogen Catalog Number:

AG10630

GenBank Accession Number:

BC033009

GeneID (NCBI):

125

UNIPROT ID:

P00325

Full Name:

alcohol dehydrogenase 1B (class I),  
beta polypeptide

Calculated MW:

375 aa, 40 kDa

Observed MW:

35-40 kDa

Purification Method:

Protein A purification

CloneNo.:

1F1B4

## Applications

Tested Applications:

WB, Indirect ELISA, IHC, IF

Species Specificity:

Human, Mouse, Rat, Pig

## Background Information

The ADH1B gene encodes the beta subunit of class I alcohol dehydrogenase (ADH), an enzyme that catalyzes the rate-limiting step for ethanol metabolism: the oxidation of alcohol to acetaldehyde. Class 1 ADH is a homo- or heterodimeric molecule, formed by the association of 3 types of class I ADH subunits, alpha (ADH1A), beta, and gamma (ADH1C). ADH1B is also named as ADH2 and belongs to the zinc-containing alcohol dehydrogenase family. This protein can exist as a homodimer (PMID:19365573).

## Storage

Storage:

Store at -80°C.

The product is shipped with ice packs. Upon receipt, store it immediately at -80°C

Storage Buffer:

PBS Only

For technical support and original validation data for this product please contact:

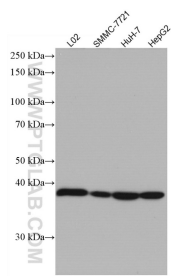
T: 4006900926

E: [Proteintech-CN@ptglab.com](mailto:Proteintech-CN@ptglab.com)

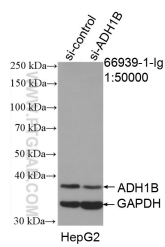
W: [ptgcn.com](http://ptgcn.com)

This product is exclusively available under Proteintech Group brand and is not available to purchase from any other manufacturer.

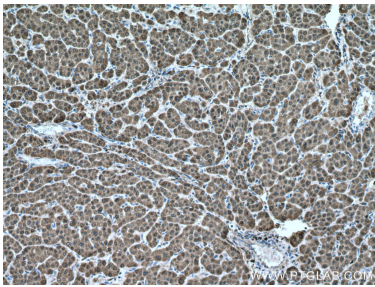
Selected Validation Data



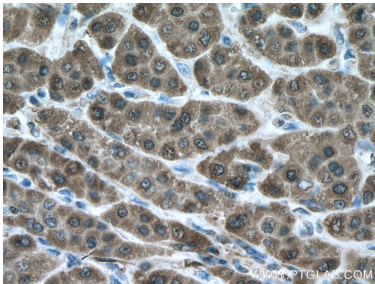
Various lysates were subjected to SDS PAGE followed by western blot with 66939-1-Ig (ADH1B antibody) at dilution of 1:5000 incubated at room temperature for 1.5 hours. This data was developed using the same antibody clone with 66939-1-PBS in a different storage buffer formulation.



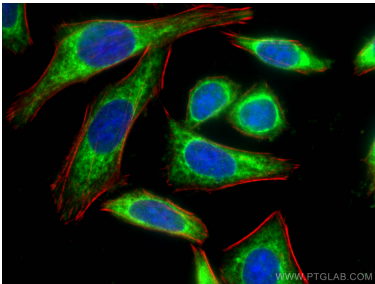
WB result of ADH1B antibody (66939-1-Ig; 1:50000; incubated at room temperature for 1.5 hours) with sh-Control and sh-ADH1B transfected HepG2 cells. This data was developed using the same antibody clone with 66939-1-PBS in a different storage buffer formulation.



Immunohistochemical analysis of paraffin-embedded human liver cancer tissue slide using 66939-1-Ig (ADH1B antibody) at dilution of 1:2000 (under 10x lens. Heat mediated antigen retrieval with Tris-EDTA buffer (pH 9.0). This data was developed using the same antibody clone with 66939-1-PBS in a different storage buffer formulation.



Immunohistochemical analysis of paraffin-embedded human liver cancer tissue slide using 66939-1-Ig (ADH1B antibody) at dilution of 1:2000 (under 40x lens. Heat mediated antigen retrieval with Tris-EDTA buffer (pH 9.0). This data was developed using the same antibody clone with 66939-1-PBS in a different storage buffer formulation.



Immunofluorescent analysis of (-20°C Ethanol) fixed HepG2 cells using ADH1B antibody (66939-1-Ig, Clone: 1F1B4 ) at dilution of 1:400 and Coralite® 488-Conjugated AffiniPure Goat Anti-Mouse IgG(H+L), CL594-Phalloidin (red). This data was developed using the same antibody clone with 66939-1-PBS in a different storage buffer formulation.