

For Research Use Only

MMP12 Monoclonal antibody

Catalog Number: 66930-1-Ig

Featured Product

4 Publications



Basic Information

Catalog Number:

66930-1-Ig

Concentration:

2285 µg/ml

Source:

Mouse

Isotype:

IgG1

Immunogen Catalog Number:

AG19068

GenBank Accession Number:

BC112301

GeneID (NCBI):

4321

UNIPROT ID:

P39900

Full Name:

matrix metalloproteinase 12
(macrophage elastase)

Calculated MW:

470 aa, 54 kDa

Observed MW:

54 kDa, 45 kDa

Purification Method:

Protein G purification

CloneNo.:

1C6B5

Recommended Dilutions:

WB 1:1000-1:3000

Applications

Tested Applications:

WB, ELISA

Cited Applications:

WB, IHC

Species Specificity:

Human

Cited Species:

human, mouse

Positive Controls:

WB : HeLa cells, A549 cells, HEK-293 cells, NCI-H1299 cells

Background Information

MMP12(Matrix metalloproteinase-12) is a 54 kDa proenzyme that is processed into a 45 kDa and then a 22 kDa active form(15723202). MMP9 and MMP12 promote intimal thickening by independent cleavage of N-cadherin, which elevates vascular smooth muscle cell proliferation via beta-catenin signalling. Its overexpression in myeloid lineage cells plays a key role in modulating myelopoiesis, immune suppression, and lung tumorigenesis(PMID: 21378275).

Notable Publications

Author	Pubmed ID	Journal	Application
Wenwen Chen	34616145	Drug Des Devel Ther	WB
Saphala Dhital	34516951	Eur J Pharmacol	IHC
Shichao Han	39819270	Curr Eye Res	WB,IHC

Storage

Storage:

Store at -20°C. Stable for one year after shipment.

Storage Buffer:

PBS with 0.02% sodium azide and 50% glycerol, pH7.3

Aliquoting is unnecessary for -20°C storage

For technical support and original validation data for this product please contact:

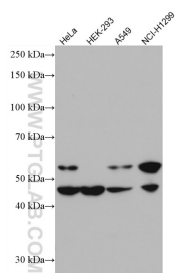
T: 4006900926

E: Proteintech-CN@ptglab.com

W: ptgcn.com

This product is exclusively available under Proteintech Group brand and is not available to purchase from any other manufacturer.

Selected Validation Data



Various lysates were subjected to SDS PAGE followed by western blot with 66930-1-Ig (MMP12 antibody) at dilution of 1:2000 incubated at room temperature for 1.5 hours.