

For Research Use Only

GPNMB Monoclonal antibody, PBS Only (Capture)

Catalog Number: 66926-2-PBS



Basic Information

Catalog Number: 66926-2-PBS	GenBank Accession Number: BC011595	Purification Method: Protein G purification
Concentration: 1mg/ml	GeneID (NCBI): 10457	CloneNo.: 2H3E12
Source: Mouse	UNIPROT ID: Q14956	Affinity: $K_D = 1.03 \times 10^{-10}$
Isotype: IgG1	Full Name: glycoprotein (transmembrane) nmb	$K_{off} = 1.53 \times 10^{-6}$
Immunogen Catalog Number: AG26747	Calculated MW: 64 kDa	$K_{on} = 1.49 \times 10^4$

Applications

Tested Applications:
Sandwich ELISA, Indirect ELISA, Sample test

Species Specificity:
human

Background Information

Storage

Storage:
Store at -80°C.
The product is shipped with ice packs. Upon receipt, store it immediately at -80°C

Storage Buffer:
PBS only, pH7.3

For technical support and original validation data for this product please contact:

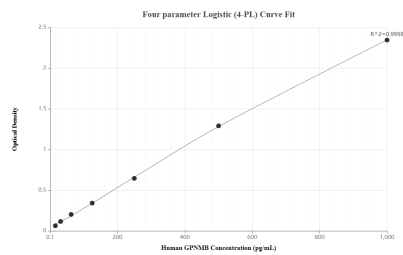
T: 4006900926

E: Proteintech-CN@ptglab.com

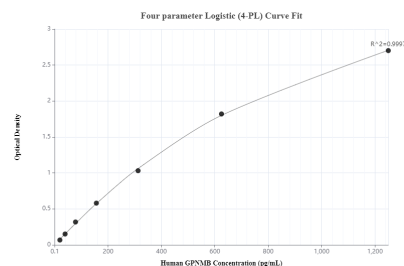
W: ptgcn.com

This product is exclusively available under Proteintech Group brand and is not available to purchase from any other manufacturer.

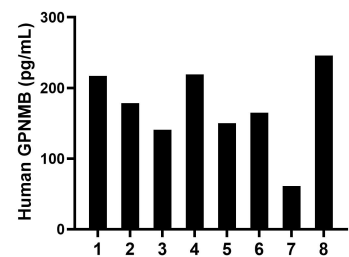
Selected Validation Data



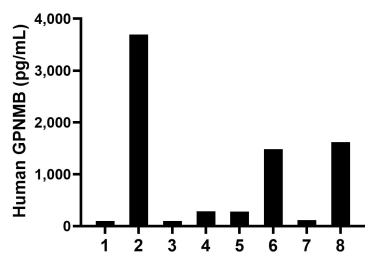
Sandwich ELISA standard curve of MP50045-1, GPNMB Monoclonal Matched Antibody Pair - PBS only. 66926-2-PBS was coated to a plate as the capture antibody and incubated with serial dilutions of standard Ag26747. 66926-4-PBS was HRP conjugated as the detection antibody. Range: 15.6-1000 pg/mL



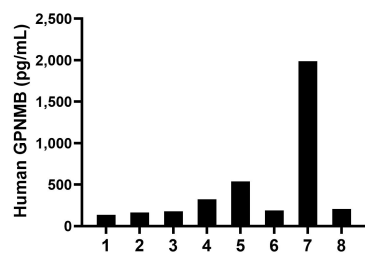
Sandwich ELISA standard curve of MP50045-2, GPNMB Monoclonal Matched Antibody Pair - PBS only. 66926-2-PBS was coated to a plate as the capture antibody and incubated with serial dilutions of standard Ag26747. 66926-3-PBS was HRP conjugated as the detection antibody. Range: 19.5-1250 pg/mL



Serum of eight individual healthy human donors was measured. The GPNMB concentration of detected samples was determined to be 172.2 pg/mL with a range of 61.0-245.8 pg/mL



Serum of eight individual healthy human donors was measured. The GPNMB concentration of detected samples was determined to be 959.1 pg/mL with a range of 97.1-3,693.3 pg/mL



Plasma of eight individual healthy human donors was measured. The GPNMB concentration of detected samples was determined to be 465.1 pg/mL with a range of 135.4-1,986.9 pg/mL