

For Research Use Only

# NFATC3 Monoclonal antibody, PBS Only (Detector)

Catalog Number: 66924-1-PBS



## Basic Information

Catalog Number:	66924-1-PBS	GenBank Accession Number:	BC001050	Purification Method:	Protein G purification
Concentration:	1mg/ml	GeneID (NCBI):	4775	CloneNo.:	1C1H8
Source:	Mouse	UNIPROT ID:	Q12968	Affinity:	$K_D = 1.16 \times 10^{-10}$
Isotype:	IgG1	Full Name:	nuclear factor of activated T-cells, cytoplasmic, calcineurin-dependent 3	$K_{off} = 5.67 \times 10^{-6}$	$K_{on} = 4.90 \times 10^4$
Immunogen Catalog Number:	AG27306	Calculated MW:	116 kDa	Observed MW:	160 kDa

## Applications

**Tested Applications:**  
WB, IHC, IF/ICC, Sandwich ELISA, Indirect ELISA

**Species Specificity:**  
human

## Background Information

NFAT (nuclear factors of activated T cells) proteins are a family of transcription factors originally identified as mediators of activation of cytokine genes in response to antigenic stimulation of T cells. NFAT proteins also play varied roles in cells outside of the immune system [PMID:11877454]. NFATc3 has specifically been implicated in vasculature development, regulation of smooth muscle contractile phenotype, and modulation of vascular smooth muscle contractility [PMID:11439183,17148444]. The calculated molecular weight of NFATC3 is 115 kDa, but the post-modified protein is about 130-170 kDa (PMID: 15728531, PMID: 15857835)

## Storage

**Storage:**  
Store at -80°C.  
**The product is shipped with ice packs. Upon receipt, store it immediately at -80°C**

**Storage Buffer:**  
PBS only, pH7.3

For technical support and original validation data for this product please contact:

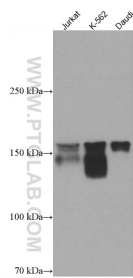
T: 4006900926

E: [Proteintech-CN@ptglab.com](mailto:Proteintech-CN@ptglab.com)

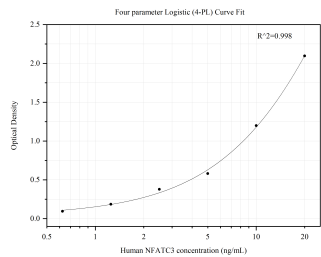
W: [ptgcn.com](http://ptgcn.com)

**This product is exclusively available under Proteintech Group brand and is not available to purchase from any other manufacturer.**

Selected Validation Data



Various lysates were subjected to SDS PAGE followed by western blot with 66924-1-Ig (NFATC3 antibody) at dilution of 1:3000 incubated at room temperature for 1.5 hours. This data was developed using the same antibody clone with 66924-1-PBS in a different storage buffer formulation.



Sandwich ELISA standard curve of MP50022-1, NFATC3 Monoclonal Matched Antibody Pair, PBS Only. Capture antibody: 66924-2-PBS. Detection antibody: HRP-conjugated 66924-1-PBS. Standard: Ag27306. Range: 0.625-20 ng/mL

