

# Integrin Beta 4 Monoclonal antibody

Catalog Number: 66922-2-Ig

## Basic Information

**Catalog Number:**

66922-2-Ig

**Size:**

1000 ug/ml

**Source:**

Mouse

**Isotype:**

IgG1

**Immunogen Catalog Number:**

AG17395

**GenBank Accession Number:**

BC126411

**GeneID (NCBI):**

3691

**UNIPROT ID:**

P16144

**Full Name:**

integrin, beta 4

**Calculated MW:**

1752 aa, 195 kDa

**Observed MW:**

200-210 kDa

**Purification Method:**

Protein A purification

**CloneNo.:**

1C2A11

**Recommended Dilutions:**

WB 1:5000-1:50000

IHC 1:1000-1:4000

IF/ICC 1:1000-1:4000

## Applications

**Tested Applications:**

WB, IHC, IF/ICC, ELISA

**Species Specificity:**

human

**Note-IHC: suggested antigen retrieval with TE buffer pH 9.0; (\*) Alternatively, antigen retrieval may be performed with citrate buffer pH 6.0**

**Positive Controls:**

**WB :** HeLa cells, A549 cells, BxPC-3 cells, SW 1990 cells, SKOV-3 cells, MCF-7 cells, Calu-3 cells

**IHC :** human skin cancer tissue,

**IF/ICC :** A431 cells,

## Background Information

Integrins are cell adhesion receptors that are heterodimers composed of non-covalently associated alpha and beta subunits. Integrin beta-4 is predominantly expressed in squamous epithelial cells, endothelial cells, immature thymocytes, Schwann cells, and fibroblasts of the peripheral nervous system (PMID: 28084395). Integrin beta-4 pairs with alpha-6, and the heterodimeric integrin alpha-6/beta-4 is a receptor for laminin. Integrin alpha-6/beta-4 plays a critical structural role in the hemidesmosome of epithelial cells, and also plays a role in the invasive and metastatic phenotype of various cancers.

## Storage

**Storage:**

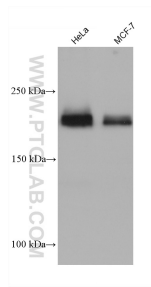
Store at -20°C. Stable for one year after shipment.

**Storage Buffer:**

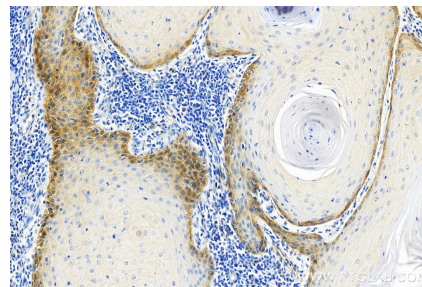
PBS with 0.02% sodium azide and 50% glycerol pH 7.3.

Aliquoting is unnecessary for -20°C storage

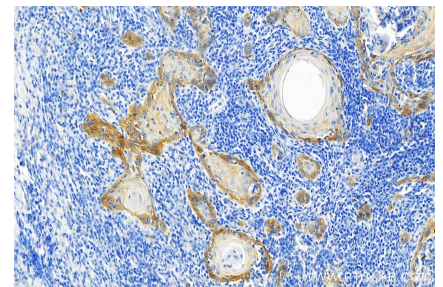
## Selected Validation Data



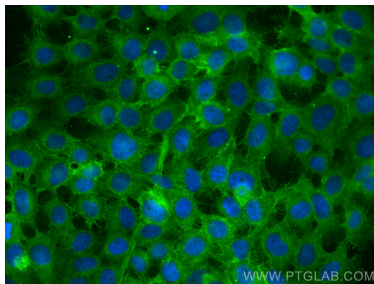
Various lysates were subjected to SDS PAGE followed by western blot with 66922-2-Ig (Integrin Beta 4 antibody) at dilution of 1:10000 incubated at room temperature for 1.5 hours.



Immunohistochemical analysis of paraffin-embedded skin cancer slide using 66922-2-Ig (Integrin Beta 4 antibody) at dilution of 1:2000 (under 20x lens). Heat mediated antigen retrieval with Tris-EDTA buffer (pH 9.0).



Immunohistochemical analysis of paraffin-embedded skin cancer slide using 66922-2-Ig (Integrin Beta 4 antibody) at dilution of 1:2000 (under 20x lens). Heat mediated antigen retrieval with Tris-EDTA buffer (pH 9.0).



Immunofluorescent analysis of (-20°C Methanol) fixed A431 cells using Integrin Beta 4 antibody (66922-2-Ig, Clone: 1C2A11) at dilution of 1:2000 and CoraLite®488-Conjugated AffiniPure Goat Anti-Mouse IgG(H+L).