

For Research Use Only

# TFG Monoclonal antibody, PBS Only (Capture)

Catalog Number: 66916-1-PBS



## Basic Information

Catalog Number: 66916-1-PBS	GenBank Accession Number: BC023599	Purification Method: Protein A purification
Size: 1mg/ml	GeneID (NCBI): 10342	CloneNo.: 1B5B9
Source: Mouse	UNIPROT ID: Q92734	
Isotype: IgG2b	Full Name: TRK-fused gene	
Immunogen Catalog Number: AG27697	Calculated MW: 400 aa, 43 kDa	
	Observed MW: 50-55 kDa	

## Applications

**Tested Applications:**  
WB, IHC, Cytometric bead array, Indirect ELISA

**Species Specificity:**  
human, pig

## Background Information

Protein TFG (TRK-fused gene protein) plays a role in regulating phosphotyrosine-specific phosphatase-1 activity. Mutations in TFG may have important clinical relevance for current therapeutic strategies to treat metastatic melanoma. Defects in TFG are a cause of thyroid papillary carcinoma (TPC), a common tumor of the thyroid that typically arises as an irregular, solid or cystic mass from otherwise normal thyroid tissue. Hereditary motor and sensory neuropathy with proximal dominant involvement (HMSN-P) is an autosomal-dominant neurodegenerative disorder characterized by widespread fasciculations, proximal-predominant muscle weakness, and atrophy followed by distal sensory involvement. Recent genetic investigation indicates that formation of TFG-containing cytoplasmic inclusions and concomitant mislocalization of TAR DNA-binding protein 43 kDa (TDP-43) underlie motor neuron degeneration in HMSN-P. Pathological overlap of proteinopathies involving TFG and TDP-43 highlights a new pathway leading to motor neuron degeneration.

## Storage

**Storage:**  
Store at -80°C.  
**The product is shipped with ice packs. Upon receipt, store it immediately at -80°C**

**Storage Buffer:**  
PBS Only

For technical support and original validation data for this product please contact:

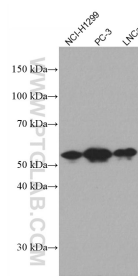
T: 4006900926

E: [Proteintech-CN@ptglab.com](mailto:Proteintech-CN@ptglab.com)

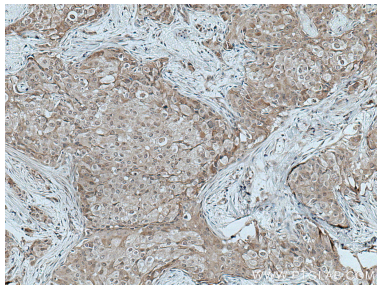
W: [ptgcn.com](http://ptgcn.com)

**This product is exclusively available under Proteintech Group brand and is not available to purchase from any other manufacturer.**

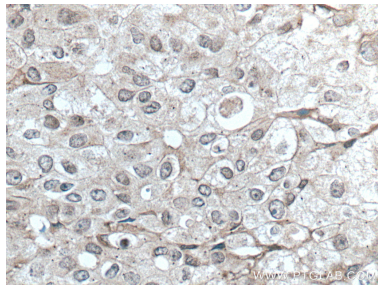
Selected Validation Data



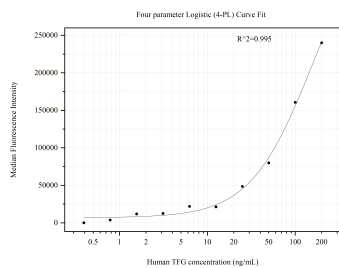
Various lysates were subjected to SDS PAGE followed by western blot with 66916-1-Ig (TFG antibody) at dilution of 1:2000 incubated at room temperature for 1.5 hours. This data was developed using the same antibody clone with 66916-1-PBS in a different storage buffer formulation.



Immunohistochemical analysis of paraffin-embedded human breast cancer tissue slide using 66916-1-Ig (TFG antibody) at dilution of 1:200 (under 10x lens. Heat mediated antigen retrieval with Tris-EDTA buffer (pH 9.0). This data was developed using the same antibody clone with 66916-1-PBS in a different storage buffer formulation.



Immunohistochemical analysis of paraffin-embedded human breast cancer tissue slide using 66916-1-Ig (TFG antibody) at dilution of 1:200 (under 40x lens. Heat mediated antigen retrieval with Tris-EDTA buffer (pH 9.0). This data was developed using the same antibody clone with 66916-1-PBS in a different storage buffer formulation.



Cytometric bead array standard curve of MP50894-1, TFG Monoclonal Matched Antibody Pair, PBS Only. Capture antibody: 66916-1-PBS. Detection antibody: 66916-2-PBS. Standard:Ag27697. Range: 0.391-200 ng/mL.