

For Research Use Only

# CX3CR1 Monoclonal antibody

Catalog Number: 66915-1-Ig **1 Publications**



## Basic Information

<b>Catalog Number:</b> 66915-1-Ig	<b>GenBank Accession Number:</b> BC028078	<b>Purification Method:</b> Protein A purification
<b>Concentration:</b> 1800 ug/ml	<b>GeneID (NCBI):</b> 1524	<b>CloneNo.:</b> 3D3B8
<b>Source:</b> Mouse	<b>UNIPROT ID:</b> P49238	<b>Recommended Dilutions:</b> WB 1:2000-1:10000 IHC 1:250-1:1000 IF-P 1:50-1:500
<b>Isotype:</b> IgG1	<b>Full Name:</b> chemokine (C-X3-C motif) receptor 1	
<b>Immunogen Catalog Number:</b> AG27698	<b>Calculated MW:</b> 40 kDa	
	<b>Observed MW:</b> 44 kDa	

## Applications

<b>Tested Applications:</b> WB, IHC, IF-P, ELISA	<b>Positive Controls:</b> WB : HEK-293 cells, Jurkat cells, SH-SY5Y cells, U-937 cells IHC : mouse kidney tissue, IF-P : mouse kidney tissue,
<b>Cited Applications:</b> WB	
<b>Species Specificity:</b> human, mouse	
<b>Cited Species:</b> mouse	
<b>Note-IHC: suggested antigen retrieval with TE buffer pH 9.0; (*) Alternatively, antigen retrieval may be performed with citrate buffer pH 6.0</b>	

## Background Information

CX3CR1, also known as GPR13, V28, and fractalkine receptor, belongs to the 7-transmembrane G protein-coupled receptor (GPCR) family. It is expressed in microglia, astrocytes, NK cells, monocytes/macrophages, and a subpopulation of T cells. CX3CR1 is the receptor for fractalkine (CX3CL1) and mediates both its adhesive and migratory functions. It also acts as a coreceptor with CD4 for HIV-1 virus envelope protein (in vitro), and some variations in the gene of CX3CR1 lead to increased susceptibility to HIV-1 infection and rapid progression to AIDS. Defects in CX3CR1 are a cause of susceptibility to age-related macular degeneration type 12 (ARMD12).

## Notable Publications

Author	Pubmed ID	Journal	Application
Ruiqi Cheng	39475454	Adv Sci (Weinh)	WB

## Storage

**Storage:**  
Store at -20°C. Stable for one year after shipment.  
**Storage Buffer:**  
PBS with 0.02% sodium azide and 50% glycerol pH 7.3.  
Aliquoting is unnecessary for -20°C storage

For technical support and original validation data for this product please contact:

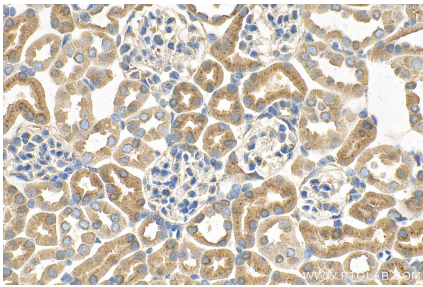
T: 4006900926

E: [Proteintech-CN@ptglab.com](mailto:Proteintech-CN@ptglab.com)

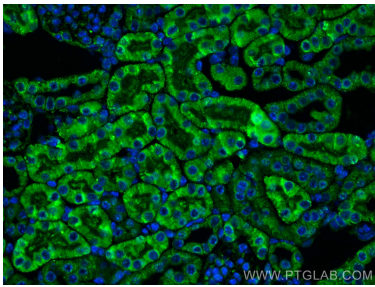
W: [ptgcn.com](http://ptgcn.com)

**This product is exclusively available under Proteintech Group brand and is not available to purchase from any other manufacturer.**

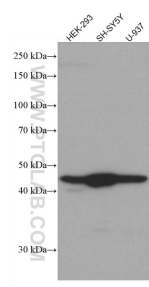
Selected Validation Data



Immunohistochemical analysis of paraffin-embedded mouse kidney tissue slide using 66915-1-Ig (CX3CR1 antibody) at dilution of 1:500 (under 40x lens). Heat mediated antigen retrieval with Tris-EDTA buffer (pH 9.0).



Immunofluorescent analysis of (4% PFA) fixed mouse kidney tissue using CX3CR1 antibody (66915-1-Ig, Clone: 3D3B8 ) at dilution of 1:200 and CoraLite®488-Conjugated AffiniPure Goat Anti-Mouse IgG(H+L).



Various lysates were subjected to SDS PAGE followed by western blot with 66915-1-Ig (CX3CR1 antibody) at dilution of 1:5000 incubated at room temperature for 1.5 hours.