

For Research Use Only

INF2 Monoclonal antibody

Catalog Number: 66910-1-Ig



Basic Information

Catalog Number:

66910-1-Ig

Size:

1600 µg/ml

Source:

Mouse

Isotype:

IgG2a

Immunogen Catalog Number:

AG17043

GenBank Accession Number:

BC008756

GeneID (NCBI):

64423

UNIPROT ID:

Q27J81

Full Name:

inverted formin, FH2 and WH2 domain containing

Calculated MW:

1249 aa, 136 kDa

Observed MW:

150-170 kDa

Purification Method:

Protein A purification

CloneNo.:

4A11A7

Recommended Dilutions:

WB 1:1000-1:4000

IHC 1:50-1:500

IF 1:50-1:500

Applications

Tested Applications:

IF/ICC, IHC, WB, ELISA

Species Specificity:

Human

Note-IHC: suggested antigen retrieval with TE buffer pH 9.0; (*) Alternatively, antigen retrieval may be performed with citrate buffer pH 6.0

Positive Controls:

WB: HeLa cells, A431 cells, PC-3 cells, HEK-293 cells, HepG2 cells

IHC: human kidney tissue,

IF: HepG2 cells,

Background Information

INF2 is a member of the formin family of actin-regulating proteins. INF2 is peripherally bound to the cytoplasmic face of the endoplasmic reticulum (ER). Mutations in the formin gene INF2 cause focal segmental glomerulosclerosis. The predicted MW of INF2 is around 136 kDa, while higher molecular mass from 140-200 kDa has been reported in literature (26383224,20493814,19366733).

Storage

Storage:

Store at -20°C. Stable for one year after shipment.

Storage Buffer:

PBS with 0.02% sodium azide and 50% glycerol pH 7.3.

Aliquoting is unnecessary for -20°C storage

For technical support and original validation data for this product please contact:

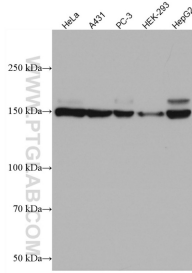
T: 4006900926

E: Proteintech-CN@ptglab.com

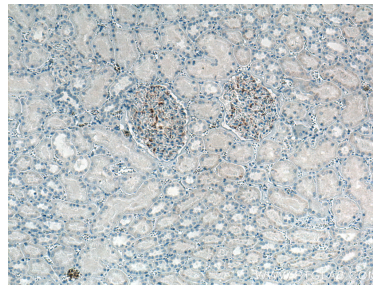
W: ptgcn.com

This product is exclusively available under Proteintech Group brand and is not available to purchase from any other manufacturer.

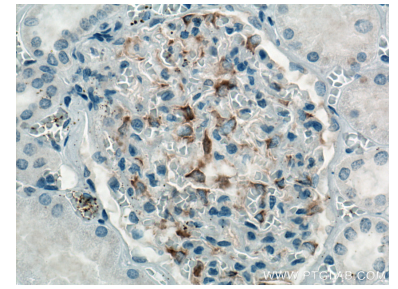
Selected Validation Data



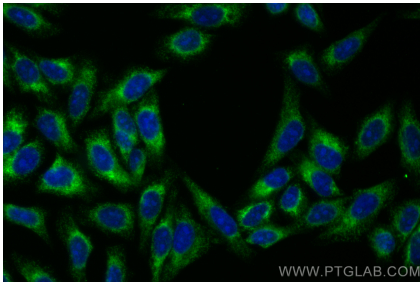
Various lysates were subjected to SDS PAGE followed by western blot with 66910-1-Ig (INF2 antibody) at dilution of 1:2000 incubated at room temperature for 1.5 hours.



Immunohistochemical analysis of paraffin-embedded human kidney tissue slide using 66910-1-Ig (INF2 antibody) at dilution of 1:200 (under 10x lens). Heat mediated antigen retrieval with Tris-EDTA buffer (pH 9.0).



Immunohistochemical analysis of paraffin-embedded human kidney tissue slide using 66910-1-Ig (INF2 antibody) at dilution of 1:200 (under 40x lens). Heat mediated antigen retrieval with Tris-EDTA buffer (pH 9.0).



Immunofluorescent analysis of (-20°C Ethanol) fixed HepG2 cells using INF2 antibody (66910-1-Ig, Clone: 4A11A7) at dilution of 1:200 and CoraLite®488-Conjugated AffiniPure Goat Anti-Mouse IgG(H+L).