

# Integrin alpha 6 Monoclonal antibody

Catalog Number: 66906-1-Ig

## Basic Information

## Catalog Number:

66906-1-Ig

## Source:

Mouse

## Isotype:

IgG2b

## Immunogen Catalog Number:

AG25866

## GenBank Accession Number:

BC136456

## GeneID (NCBI):

3655

## UNIPROT ID:

P23229

## Full Name:

integrin, alpha 6

## Calculated MW:

1073 aa, 119 kDa

## Observed MW:

115-120 kDa

## Purification Method:

Protein A purification

## CloneNo.:

2B12A1

## Recommended Dilutions:

WB: 1:1000-1:6000

## Applications

## Tested Applications:

WB, ELISA

## Species Specificity:

human

## Positive Controls:

WB : A431 cells, JAR cells, human placenta tissue

## Background Information

The integrins are a superfamily of cell adhesion receptors that bind to extracellular matrix ligands, cell-surface ligands, and soluble ligands (PMID: 17543136). They are transmembrane  $\alpha\beta$  heterodimers and at least 24 distinct integrin heterodimers are formed by the combination of 18  $\alpha$  and eight  $\beta$  known subunits (PMID: 17543136; 20029421). In addition to mediating cell adhesion, integrins also play important roles in modulating signal transduction pathways that control cellular responses including migration, proliferation, differentiation, and apoptosis (PMID: 19118207). Integrin alpha 6 (ITGA6, also known as CD49f or VLA-6) is a 120-kDa single-pass type 1 transmembrane glycoprotein, which combines with the beta 1 subunit (ITGB1, CD29) or beta 4 subunit (ITGB4, CD104) to form heterodimeric laminin receptors (PMID: 1976638; 2351695). Integrin alpha 6 mediates cell-to-cell and cell-to-stroma adhesion. It has also been found in many different stem cell populations and is involved in homing and connecting stem cells to their niches and regulating self-renewal mechanisms in stem cells (PMID: 28494695).

## Storage

## Storage:

Store at -20°C. Stable for one year after shipment.

## Storage Buffer:

PBS with 0.02% sodium azide and 50% glycerol, pH7.3

Aliquoting is unnecessary for -20°C storage

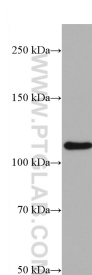
For technical support and original validation data for this product please contact:

T: 4006900926

E: [Proteintech-CN@ptglab.com](mailto:Proteintech-CN@ptglab.com)W: [ptgcn.com](http://ptgcn.com)

This product is exclusively available under Proteintech Group brand and is not available to purchase from any other manufacturer.

## Selected Validation Data



A431 cells were subjected to SDS PAGE followed by western blot with 66906-1-Ig (Integrin alpha-6 antibody) at dilution of 1:3000 incubated at room temperature for 1.5 hours.