

For Research Use Only

Calnexin Monoclonal antibody, PBS Only (Capture)

Catalog Number: 66903-2-PBS



Basic Information

Catalog Number:

66903-2-PBS

Source:

Mouse

Isotype:

IgG2a

Immunogen Catalog Number:

AG25535

GenBank Accession Number:

BC003552

GeneID (NCBI):

821

UNIPROT ID:

P27824

Full Name:

calnexin

Calculated MW:

90 kDa

Purification Method:

Protein A purification

CloneNo.:

1G11C1

Applications

Tested Applications:

Cytometric bead array, Indirect ELISA

Species Specificity:

human

Background Information

Storage

Storage:

Store at -80°C.

The product is shipped with ice packs. Upon receipt, store it immediately at -80°C

Storage Buffer:

PBS only, pH7.3

For technical support and original validation data for this product please contact:

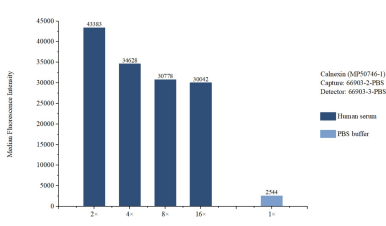
T: 4006900926

E: Proteintech-CN@ptglab.com

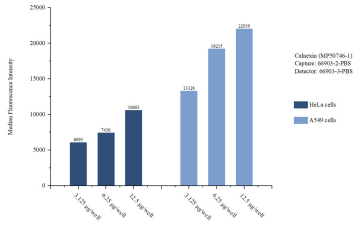
W: ptgcn.com

This product is exclusively available under Proteintech Group brand and is not available to purchase from any other manufacturer.

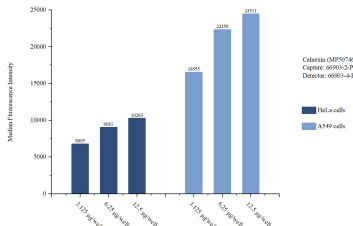
Selected Validation Data



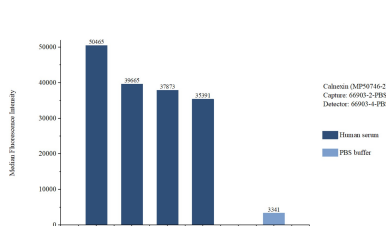
Cytometric bead array sample test of MP50746-1, Calnexin Monoclonal Matched Antibody Pair, PBS Only. Capture antibody: 66903-2-PBS. Detection antibody: 66903-3-PBS.



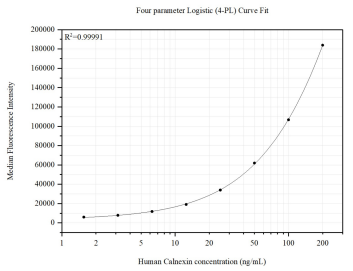
Cytometric bead array sample test of MP50746-1, Calnexin Monoclonal Matched Antibody Pair, PBS Only. Capture antibody: 66903-2-PBS. Detection antibody: 66903-3-PBS.



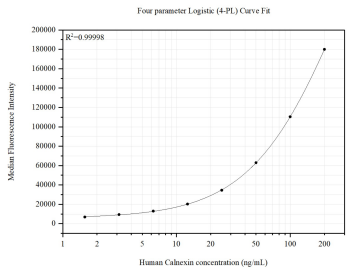
Cytometric bead array sample test of MP50746-2, Calnexin Monoclonal Matched Antibody Pair, PBS Only. Capture antibody: 66903-2-PBS. Detection antibody: 66903-4-PBS.



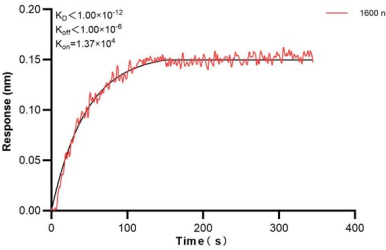
Cytometric bead array sample test of MP50746-2, Calnexin Monoclonal Matched Antibody Pair, PBS Only. Capture antibody: 66903-2-PBS. Detection antibody: 66903-4-PBS.



Cytometric bead array standard curve of MP50746-1, Calnexin Monoclonal Matched Antibody Pair, PBS Only. Capture antibody: 66903-2-PBS. Detection antibody: 66903-3-PBS. Standard:Ag25535. Range: 1.563-200 ng/mL



Cytometric bead array standard curve of MP50746-2, Calnexin Monoclonal Matched Antibody Pair, PBS Only. Capture antibody: 66903-2-PBS. Detection antibody: 66903-4-PBS. Standard:Ag25535. Range: 1.563-200 ng/mL



Bioluminescence resonance energy transfer (BLI) kinetic assay of 66903-2-Ig against Human Calnexin was performed. The affinity constant is below 1 pM...