

For Research Use Only

Calnexin Monoclonal antibody, PBS Only



Catalog Number: 66903-1-PBS

Featured Product

Basic Information

Catalog Number:

66903-1-PBS

Size:

1 mg/ml

Source:

Mouse

Isotype:

IgG1

Immunogen Catalog Number:

AG25535

GenBank Accession Number:

BC003552

GeneID (NCBI):

821

UNIPROT ID:

P27824

Full Name:

calnexin

Calculated MW:

90 kDa

Observed MW:

90 kDa

Purification Method:

Protein A purification

CloneNo.:

2A2C6

Applications

Tested Applications:

WB, Indirect ELISA, IHC, IF

Species Specificity:

Human, mouse, rat

Background Information

Calnexin is a molecular chaperone that resides in the endoplasmic reticulum (ER) and participates in the folding and assembly of newly synthesized proteins. Calnexin is highly abundant in ER and is frequently used as an ER marker.

Storage

Storage:

Store at -80°C.

The product is shipped with ice packs. Upon receipt, store it immediately at -80°C

Storage Buffer:

PBS Only

For technical support and original validation data for this product please contact:

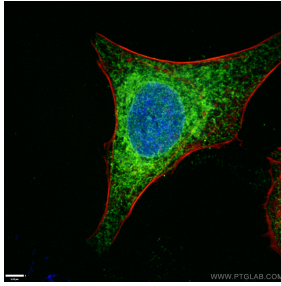
T: 4006900926

E: Proteintech-CN@ptglab.com

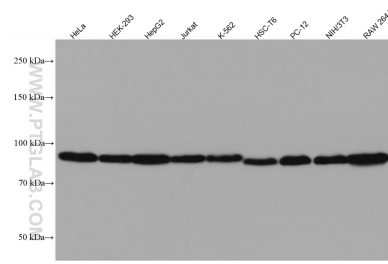
W: ptgcn.com

This product is exclusively available under Proteintech Group brand and is not available to purchase from any other manufacturer.

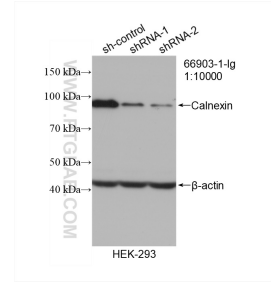
Selected Validation Data



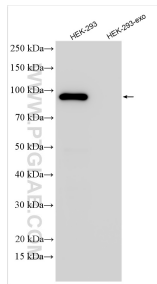
Immunofluorescent analysis of (4% PFA) fixed HeLa cells using 66903-1-Ig (Calnexin antibody), at dilution of 1:400 and CoraLite®488-Conjugated AffiniPure Goat Anti-Mouse IgG(H+L). Red: staining with CoraLite555-Phalloidin. This data was developed using the same antibody clone with 66903-1-PBS in a different storage buffer formulation.



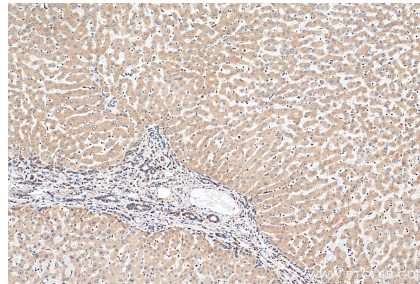
Various lysates were subjected to SDS PAGE followed by western blot with 66903-1-Ig (Calnexin antibody) at dilution of 1:20000 incubated at room temperature for 1.5 hours. This data was developed using the same antibody clone with 66903-1-PBS in a different storage buffer formulation.



WB result of Calnexin antibody (66903-1-Ig; 1:10000; incubated at room temperature for 1.5 hours) with sh-Control and sh-Calnexin transfected HEK-293 cells. This data was developed using the same antibody clone with 66903-1-PBS in a different storage buffer formulation.



HEK-293 cells and HEK-293-derived exosomes (HEK-293-exo) were subjected to SDS PAGE followed by western blot with 66903-1-Ig (Calnexin antibody) at dilution of 1:10000 incubated at room temperature for 1.5 hours. This data was developed using the same antibody clone with 66903-1-PBS in a different storage buffer formulation.



Immunohistochemical analysis of paraffin-embedded human hepatocirrhosis tissue slide using 66903-1-Ig (Calnexin antibody) at dilution of 1:2000 (under 10x lens). Heat mediated antigen retrieval with Tris-EDTA buffer (pH 9.0). This data was developed using the same antibody clone with 66903-1-PBS in a different storage buffer formulation.