

For Research Use Only

# Calnexin Monoclonal antibody

Catalog Number: 66903-1-Ig

Featured Product

68 Publications



## Basic Information

Catalog Number:

66903-1-Ig

Concentration:

1000 µg/ml

Source:

Mouse

Isotype:

IgG1

Immunogen Catalog Number:

AG25535

GenBank Accession Number:

BC003552

GeneID (NCBI):

821

UNIPROT ID:

P27824

Full Name:

calnexin

Calculated MW:

90 kDa

Observed MW:

90 kDa

Purification Method:

Protein A purification

CloneNo.:

2A2C6

Recommended Dilutions:

WB 1:5000-1:20000

IHC 1:1000-1:4000

IF/ICC 1:200-1:800

## Applications

Tested Applications:

WB, IHC, IF/ICC, ELISA

Cited Applications:

WB, IHC, IF

Species Specificity:

Human, mouse, rat

Cited Species:

human, mouse, rat, pig, rabbit

**Note-IHC: suggested antigen retrieval with TE buffer pH 9.0; (\*) Alternatively, antigen retrieval may be performed with citrate buffer pH 6.0**

Positive Controls:

**WB** : HeLa cells, HEK-293 cells, HepG2 cells, Jurkat cells, K-562 cells, HSC-T6 cells, PC-12 cells, NIH/3T3 cells, RAW 264.7 cells

**IHC** : human hepatocirrhosis tissue,

**IF/ICC** : HeLa cells, HepG2 cells

## Background Information

Calnexin is a molecular chaperone that resides in the endoplasmic reticulum (ER) and participates in the folding and assembly of newly synthesized proteins. Calnexin is highly abundant in ER and is frequently used as an ER marker.

## Notable Publications

Author	Pubmed ID	Journal	Application
Pu Song	36125406	EMBO Rep	IF
Folnetti A Alvarez	36114323	Breast Cancer Res Treat	WB
Xueqiang Peng	32949647	Biochim Biophys Acta Mol Cell Res	WB

## Storage

Storage:

Store at -20°C. Stable for one year after shipment.

Storage Buffer:

PBS with 0.02% sodium azide and 50% glycerol pH 7.3.

Aliquoting is unnecessary for -20°C storage

For technical support and original validation data for this product please contact:

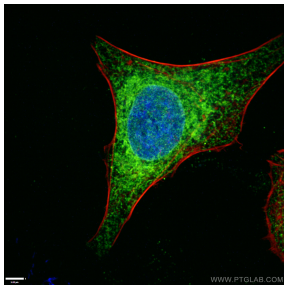
T: 4006900926

E: [Proteintech-CN@ptglab.com](mailto:Proteintech-CN@ptglab.com)

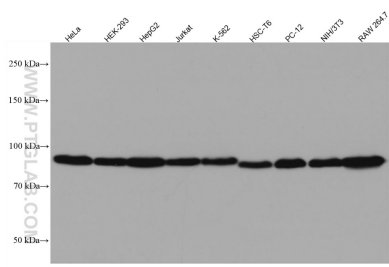
W: [ptgcn.com](http://ptgcn.com)

**This product is exclusively available under Proteintech Group brand and is not available to purchase from any other manufacturer.**

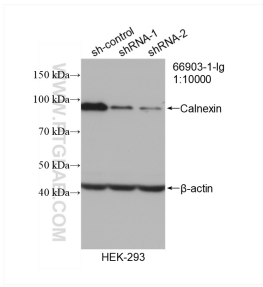
Selected Validation Data



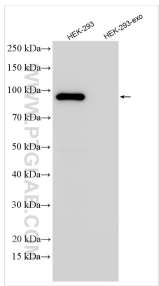
Immunofluorescent analysis of (4% PFA) fixed HeLa cells using 66903-1-Ig (Calnexin antibody), at dilution of 1:400 and CoraLite® 488-Conjugated Goat Anti-Mouse IgG(H+L). Red: staining with CoraLite555-Phalloidin.



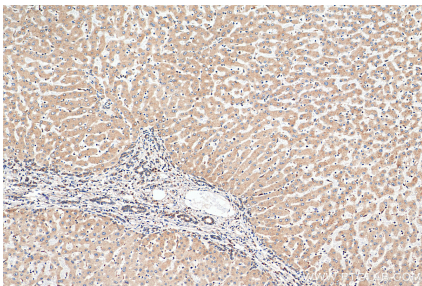
Various lysates were subjected to SDS PAGE followed by western blot with 66903-1-Ig (Calnexin antibody) at dilution of 1:20000 incubated at room temperature for 1.5 hours.



WB result of Calnexin antibody (66903-1-Ig; 1:10000; incubated at room temperature for 1.5 hours) with sh-Control and sh-Calnexin transfected HEK-293 cells.



HEK-293 cells and HEK-293-derived exosomes (HEK-293-exo) were subjected to SDS PAGE followed by western blot with 66903-1-Ig (Calnexin antibody) at dilution of 1:10000 incubated at room temperature for 1.5 hours.



Immunohistochemical analysis of paraffin-embedded human hepatocirrhosis tissue slide using 66903-1-Ig (Calnexin antibody) at dilution of 1:2000 (under 10x lens). Heat mediated antigen retrieval with Tris-EDTA buffer (pH 9.0).