

For Research Use Only

# Jagged1 Monoclonal antibody

Catalog Number: 66890-1-Ig

Featured Product

13 Publications



## Basic Information

Catalog Number:

66890-1-Ig

Concentration:

2536 ug/ml

Source:

Mouse

Isotype:

IgA

Immunogen Catalog Number:

AG11891

GenBank Accession Number:

BC098393

GeneID (NCBI):

182

UNIPROT ID:

P78504

Full Name:

jagged 1 (Alagille syndrome)

Calculated MW:

1218 aa, 134 kDa

Observed MW:

150 kDa

Purification Method:

Protein A purification

CloneNo.:

2A7D11

Recommended Dilutions:

WB 1:5000-1:50000

## Applications

Tested Applications:

WB, ELISA

Cited Applications:

WB

Species Specificity:

human

Cited Species:

human, goat

Positive Controls:

WB : HEK-293 cells, HT-29 cells

## Background Information

Jagged1 is a type I, membrane- anchored, multidomain protein and a ligand of the Notch receptor. The receptor-ligand interaction can trigger the Notch signaling and activate transcription factors that play key roles in cell differentiation and morphogenesis. The predicted MW of Jagged1 is 134 kDa, while higher MW around 150-180 kDa had been observed in literatures (PMID: 9716576, 9596653).

## Notable Publications

Author	Pubmed ID	Journal	Application
Xianyun Xu	36158688	Front Oncol	WB
LinXi Cheng	34489520	Commun Biol	FC
Wenyu Zhu	34591397	Int J Med Mushrooms	WB

## Storage

Storage:

Store at -20°C. Stable for one year after shipment.

Storage Buffer:

PBS with 0.02% sodium azide and 50% glycerol, pH7.3

Aliquoting is unnecessary for -20°C storage

For technical support and original validation data for this product please contact:

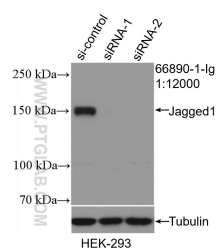
T: 4006900926

E: [Proteintech-CN@ptglab.com](mailto:Proteintech-CN@ptglab.com)

W: [ptgcn.com](http://ptgcn.com)

This product is exclusively available under Proteintech Group brand and is not available to purchase from any other manufacturer.

## Selected Validation Data



WB result of Jagged1 antibody (66890-1-Ig; 1:12000; incubated at room temperature for 1.5 hours) with sh-Control and sh-Jagged1 transfected HEK-293 cells.