

For Research Use Only

# GLUT2 Monoclonal antibody

Catalog Number: 66889-1-Ig **4 Publications**



## Basic Information

Catalog Number: 66889-1-Ig	GenBank Accession Number: BC060041	Purification Method: Protein G purification
Concentration: 1000 µg/ml	GeneID (NCBI): 6514	CloneNo.: 1G8B1
Source: Mouse	UNIPROT ID: P11168	Recommended Dilutions: WB: 1:5000-1:50000 IHC: 1:500-1:2000
Isotype: IgG1	Full Name: solute carrier family 2 (facilitated glucose transporter), member 2	
Immunogen Catalog Number: AG14551	Calculated MW: 57 kDa	
	Observed MW: 55-60 kDa	

## Applications

Tested Applications: WB, IHC, ELISA	Positive Controls:
Cited Applications: WB, IHC, IF	WB : 4T1 cells, HSC-T6 cells, HeLa cells, HepG2 cells
Species Specificity: Human, rat, mouse	IHC : human pancreas cancer tissue,
Cited Species: human, mouse, rat	
<b>Note-IHC: suggested antigen retrieval with TE buffer pH 9.0; (*) Alternatively, antigen retrieval may be performed with citrate buffer pH 6.0</b>	

## Background Information

GLUT2 is a member of glucose transporters or GLUTs which catalyze the glucose transport across plasma membrane. GLUT2 is selectively expressed in hepatocytes, pancreatic beta cells, and absorptive renal and intestinal epithelial cells. GLUT2 is required to maintain normal glucose homeostasis and normal function and development of the endocrine pancreas. Its absence leads to symptoms characteristic of non-insulin-dependent diabetes mellitus.

## Notable Publications

Author	Pubmed ID	Journal	Application
Fei Peng	39967138	Food Res Int	WB
Sipeng Sun	39263491	J Diabetes Res	WB,IF
Weijian Zhang	38192676	Oncol Lett	IHC

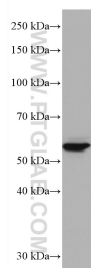
## Storage

Storage:  
Store at -20°C. Stable for one year after shipment.  
Storage Buffer:  
PBS with 0.02% sodium azide and 50% glycerol, pH7.3  
Aliquoting is unnecessary for -20°C storage

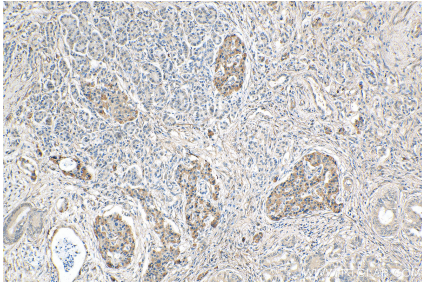
For technical support and original validation data for this product please contact:  
T: 4006900926 E: Proteintech-CN@ptglab.com W: ptgcn.com

This product is exclusively available under Proteintech Group brand and is not available to purchase from any other manufacturer.

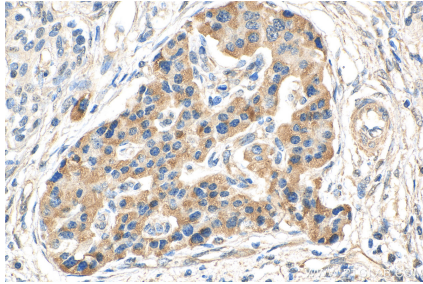
## Selected Validation Data



4T1 cells were subjected to SDS PAGE followed by western blot with 66889-1-Ig (SLC2A2 antibody) at dilution of 1:10000 incubated at room temperature for 1.5 hours.



Immunohistochemical analysis of paraffin-embedded human pancreas cancer tissue slide using 66889-1-Ig (GLUT2 antibody) at dilution of 1:1000 (under 10x lens). Heat mediated antigen retrieval with Tris-EDTA buffer (pH 9.0).



Immunohistochemical analysis of paraffin-embedded human pancreas cancer tissue slide using 66889-1-Ig (GLUT2 antibody) at dilution of 1:1000 (under 40x lens). Heat mediated antigen retrieval with Tris-EDTA buffer (pH 9.0).