

For Research Use Only

# ASF1A Monoclonal antibody

Catalog Number: 66884-1-Ig



## Basic Information

<b>Catalog Number:</b> 66884-1-Ig	<b>GenBank Accession Number:</b> BC010878	<b>Purification Method:</b> Protein A purification
<b>Size:</b> 1400 µg/ml	<b>GeneID (NCBI):</b> 25842	<b>CloneNo.:</b> 2D4A6
<b>Source:</b> Mouse	<b>UNIPROT ID:</b> Q9Y294	<b>Recommended Dilutions:</b> WB 1:1000-1:4000 IF 1:50-1:500
<b>Isotype:</b> IgG3	<b>Full Name:</b> ASF1 anti-silencing function 1 homolog A (S. cerevisiae)	
<b>Immunogen Catalog Number:</b> AG1233	<b>Calculated MW:</b> 204 aa, 23 kDa	
	<b>Observed MW:</b> 21-23 kDa	

## Applications

<b>Tested Applications:</b> IF/ICC, WB, ELISA	<b>Positive Controls:</b>
<b>Species Specificity:</b> Human, rat	<b>WB:</b> Jurkat cells, HSC-T6 cells <b>IF:</b> HepG2 cells,

## Background Information

Anti-silencing function 1, *S.cerevisiae*, homolog of A(ASF1A) is a histone chaperone that has a crucial role in the remodeling of chromatin structure during replication, DNA repair, and cellular senescence. It promotes chromatin assembly in replication-dependent manner by cooperation with chromatin assembly factor1(CAF-1), and cooperates with HIRA in replication-independent manner. It's required for the formation of senescence-associated heterochromatin foci(SAHF) and efficient senescence-associated cell cycle exit.

## Storage

**Storage:**  
Store at -20°C. Stable for one year after shipment.  
**Storage Buffer:**  
PBS with 0.02% sodium azide and 50% glycerol pH 7.3.  
Aliquoting is unnecessary for -20°C storage

For technical support and original validation data for this product please contact:

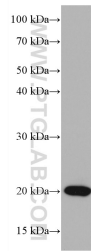
T: 4006900926

E: [Proteintech-CN@ptglab.com](mailto:Proteintech-CN@ptglab.com)

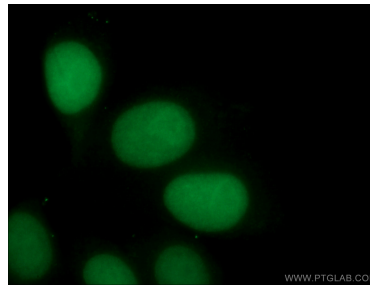
W: [ptgcn.com](http://ptgcn.com)

This product is exclusively available under Proteintech Group brand and is not available to purchase from any other manufacturer.

## Selected Validation Data



Jurkat cells were subjected to SDS PAGE followed by western blot with 66884-1-Ig (ASF1A antibody) at dilution of 1:2000 incubated at room temperature for 1.5 hours.



Immunofluorescent analysis of (4% PFA) fixed HepG2 cells using 66884-1-Ig (ASF1A antibody) at dilution of 1:100 and CoraLite488-Conjugated AffiniPure Goat Anti-Mouse IgG(H+L).