

Flotillin 2 Monoclonal antibody

Catalog Number: 66881-1-Ig **8 Publications**

Basic Information

Catalog Number:

66881-1-Ig

Source:

Mouse

Isotype:

IgG1

Immunogen Catalog Number:

AG28308

GenBank Accession Number:

BC017292

GeneID (NCBI):

2319

UNIPROT ID:

Q14254

Full Name:

flotillin 2

Calculated MW:

379 aa, 42 kDa

Observed MW:

45 kDa

Purification Method:

Protein G purification

CloneNo.:

1E11G12

Recommended Dilutions:

WB: 1:2000-1:20000

IHC: 1:200-1:800

IF/ICC: 1:2000-1:8000

FC (Intra): 0.40 ug per 10⁶ cells in a 100 µl suspension

Applications

Tested Applications:

WB, IHC, IF/ICC, FC (Intra), ELISA

Cited Applications:

WB, IF, CoIP

Species Specificity:

human, mouse, rat, pig, rabbit

Cited Species:

human, mouse

Note-IHC: suggested antigen retrieval with TE buffer pH 9.0; (*) Alternatively, antigen retrieval may be performed with citrate buffer pH 6.0

Positive Controls:

WB : pig brain tissue, A431 cells, HeLa cells, HEK-293 cells, A549 cells, NIH/3T3 cells, rabbit brain tissue, rat brain tissue, mouse brain tissue

IHC : human breast cancer tissue,

IF/ICC : HeLa cells,

FC (Intra) : HeLa cells,

Background Information

Flotillins are membrane-associated proteins that contain two homologous isoforms, flotillin 1 (FLOT1) and flotillin 2 (FLOT2). They are highly conserved and widely expressed proteins that commonly used as markers of lipid rafts. Flotillins are involved in various signaling pathways, cell adhesion, membrane trafficking and axonal growth.

Notable Publications

Author	Pubmed ID	Journal	Application
Jasjot Singh	36266287	Nat Commun	WB, CoIP
Xiangzhi Li	34930675	J Dermatol Sci	WB
Skye Marshall	36356007	Toxins (Basel)	WB

Storage

Storage:

Store at -20°C. Stable for one year after shipment.

Storage Buffer:

PBS with 0.02% sodium azide and 50% glycerol, pH7.3

Aliquoting is unnecessary for -20°C storage

For technical support and original validation data for this product please contact:

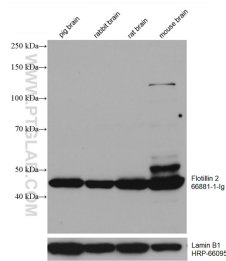
T: 4006900926

E: Proteintech-CN@ptglab.com

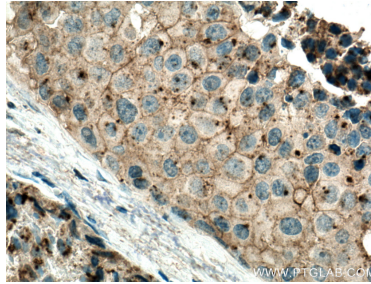
W: ptgcn.com

This product is exclusively available under Proteintech Group brand and is not available to purchase from any other manufacturer.

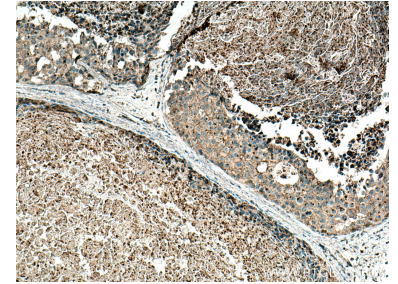
Selected Validation Data



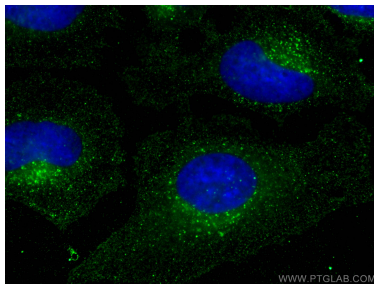
Various lysates were subjected to SDS PAGE followed by western blot with 66881-1-Ig (Flotillin 2 antibody) at dilution of 1:10000 incubated at room temperature for 1.5 hours. The membrane was stripped and reblotted with HRP-conjugated Lamin B1 Monoclonal antibody (HRP-66095) as loading control.



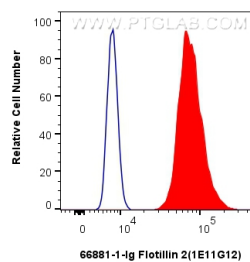
Immunohistochemical analysis of paraffin-embedded human breast cancer tissue slide using 66881-1-Ig (Flotillin 2 antibody) at dilution of 1:400 (under 40x lens). Heat mediated antigen retrieval with Tris-EDTA buffer (pH 9.0).



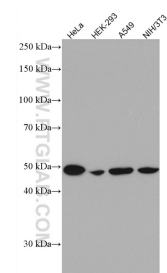
Immunohistochemical analysis of paraffin-embedded human breast cancer tissue slide using 66881-1-Ig (Flotillin 2 antibody) at dilution of 1:400 (under 10x lens). Heat mediated antigen retrieval with Tris-EDTA buffer (pH 9.0).



Immunofluorescent analysis of (-20°C Methanol) fixed HeLa cells using Flotillin 2 antibody (66881-1-Ig, Clone: 1E11G12) at dilution of 1:4000 and CoraLite®488-Conjugated AffiniPure Goat Anti-Mouse IgG(H+L).



1x10⁶ HeLa cells were intracellularly stained with 0.4 ug Flotillin 2 Monoclonal antibody (66881-1-Ig, Clone:1E11G12) and CoraLite488-conjugated Donkey Anti-Mouse IgG(H+L)(SA00013-5)(red), or 0.4 ug Mouse IgG1 Isotype Control (MOPC-21) (65124-1-Ig, Clone: MOPC-21) (blue). Cells were fixed with 4% PFA and permeabilized with Flow Cytometry Perm Buffer.



Various lysates were subjected to SDS PAGE followed by western blot with 66881-1-Ig (Flotillin 2 antibody) at dilution of 1:2000 incubated at room temperature for 1.5 hours.